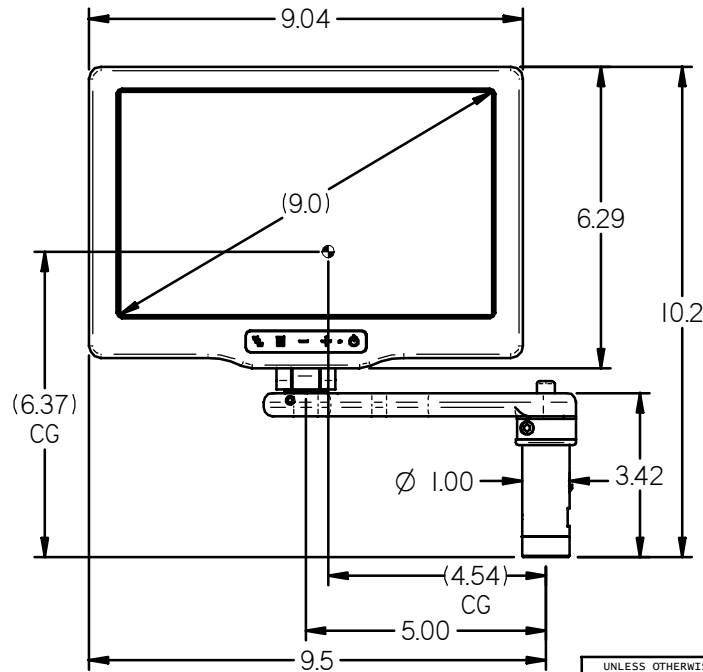
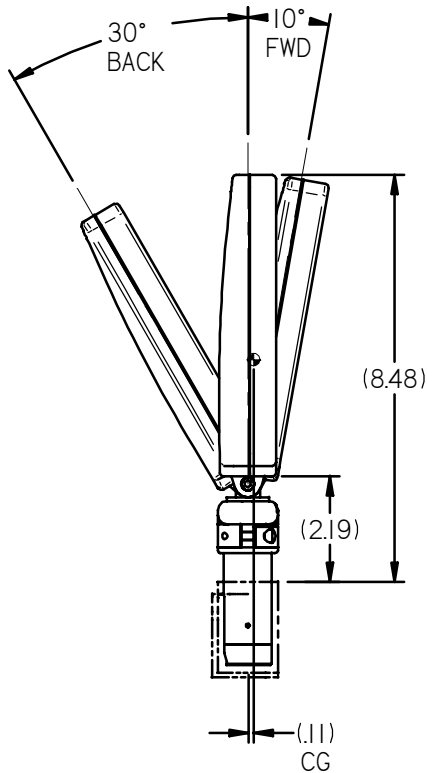
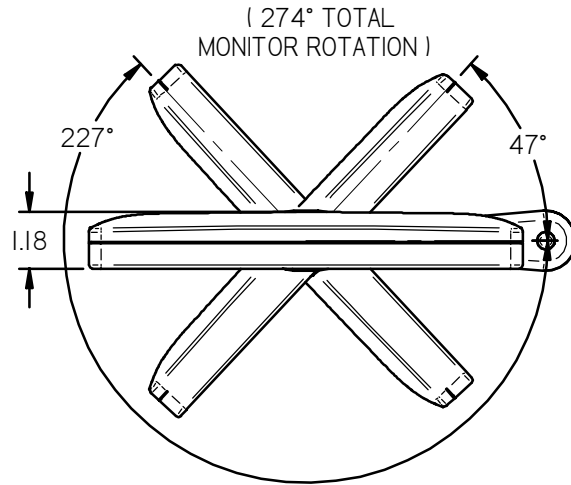


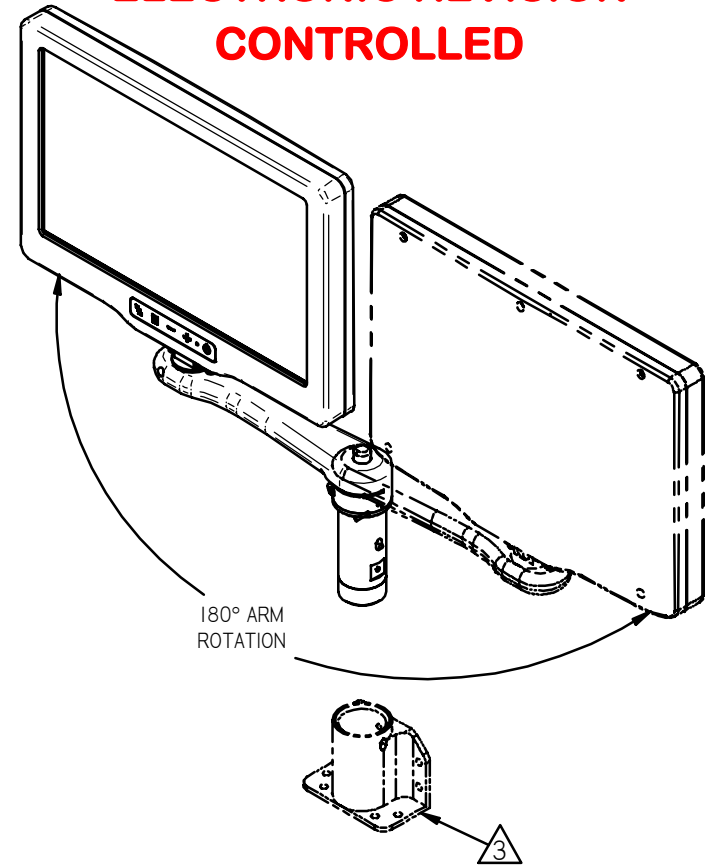
NOTES: (unless otherwise specified)

1. COMPONENT WEIGHT: 2.39 LBS. ± 10%
  2. LABELS, SHIPPING PACKAGE, AND SOME MINOR PARTS OMITTED FROM DRAWING FOR CLARITY
- ⚠ BASE SOLD SEPARATELY



2 REVISIONS						
ZONE	REV	DESCRIPTION	DATE	BY	CHG NO	APRV
pg2	2.0	CHG LCD PERFORMANCE SPEC TO HI-RES	03/19/12	GJH		JC
	A	RELEASE FOR PRODUCTION	07/26/12	GJH	12-0434	
pg2	B	CHG INRUSH CURRENT INFORMATION	9/11/12	GJH	12-0522	BEF

**ELECTRONIC REVISION CONTROLLED**



THE INFORMATION CONTAINED HEREIN IS PROPRIETARY TO ROSEN AVIATION, LLC. IT SHALL NOT BE REPRODUCED OR DISCLOSED IN WHOLE OR IN PART OR USED FOR ANY DESIGN OR MANUFACTURE EXCEPT WHEN SUCH USER POSSESSES DIRECT, WRITTEN AUTHORIZATION FROM ROSEN AVIATION. THIS DRAWING MAY BE COVERED UNDER ONE OR MORE U.S. OR INTERNATIONAL PATENTS, PLEASE CONTACT ROSEN AVIATION FOR SPECIFIC INFORMATION.

<b>ROSEN AVIATION</b> 1020 OWEN LOOP SOUTH EUGENE, OREGON 97402 TEL: (541) 342-3802 FAX: (541) 342-4912	APPROVALS	INITIAL	DATE
	DRAWN BY	GJH	02/02/12
	CHECKER	JC	07/26/12
	ENGINEER	GJH	07/26/12
TITLE <b>OUTLINE &amp; INSTALLATION DRAWING,          9" MONITOR, CENTER, SXP5          POGO ARM</b>			
FIRST CALLED FOR: (FCF) <b>9000-</b>			
DWG NO		9000-011-CD	
SIZE	A	REV	B
SCALE	1 : 4	SHEET	1 OF 2

REFER TO [www.rosenaviation.com](http://www.rosenaviation.com) FOR THE LATEST REVISION INFORMATION.

**PERFORMANCE SPECIFICATIONS** (Reference)

LCD Performance	
Screen Resolution (pixels)	1280 x 768
Video Standards Supported	COMPOSITE: NTSC,PAL, SECAM
Display Viewing Area (mm)	196.8 X 118
Horizontal Viewing Angle	-85° to 85°
Vertical Viewing Angle	-85° to 85°
Contrast Ratio (Typical)	650:1
Screen Brightness (Typical)	400 cd/m <sup>2</sup>

Power Requirements	
Nominal Voltage/Current	28VDC / 0.53 A
Inrush Current	5.2 A for 1.0 ms
Op Voltage/Current Range	18 VDC/0.88 A - 32VDC/0.45 A
Maximum Current Draw	.88 A
Power Consumption	16 W Max

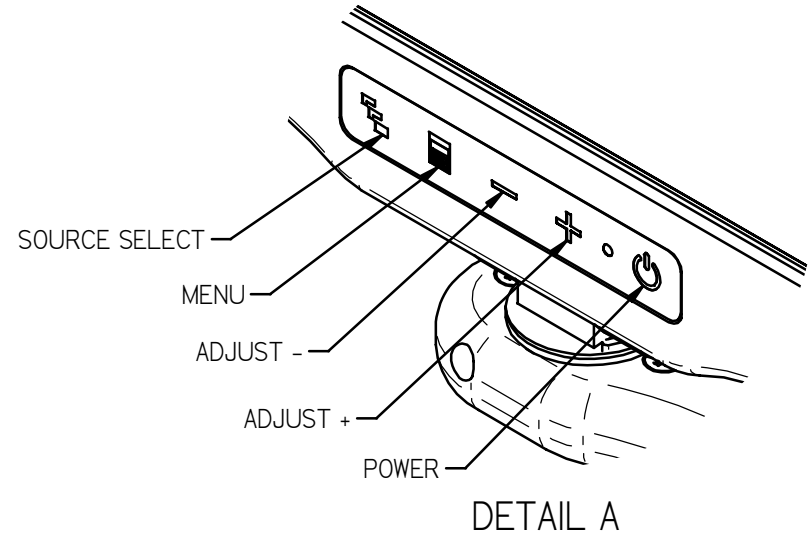
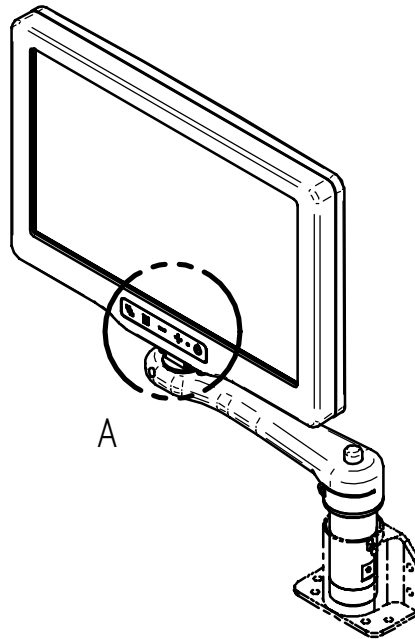
Environmental Specifications	
Operating Temperature	0°C - 50°C
Altitude	15,000ft
Humidity	95%RH
Vibration	1.48 grms
Power Input	DO-160F Cat Z(A)
Radio Frequency Susceptibility	DO-160F Cat T
Emission of RF Energy	DO-160F Cat M

**9 Pin Pinout**

SlimLine Base Receptacle	
Model# 0100-041, 0100-042, & 0100-043	
Connector: 9 Pin Male D-Sub Positronic SD9M0000Z	
Mate: 9 Pin Female D-Subminiature Positronic SD9F0000X	
Pin #	Monitor signal
1	Reserved
2	+28V DC Input
3	DC Return
4	Select Sw itch
5	Select Sw itch Return
6	Reserved
7	Video Signal Input
8	Video Ground
9	Reserved

**BNC/Molex Pinout**

Slimline Base Receptacle	
Model 0100-040	
Video Connector: BNC Jack, AMP 5221199-5	
Power Connector: Male 3 pin, .062" Molex	
Mating Video Connector: BNC Plug	
Mating Power Connector: Molex 03-06-1038	
Mating Power Contact: Molex 02-06-1103	
Pin #	Monitor signal
BNC signal	Video Signal
BNC shield	Video Return
Molex 1	+28V DC
Molex 2	DC Return
Molex 3	Reserved



THE INFORMATION CONTAINED HEREIN IS PROPRIETARY TO ROSEN AVIATION, LLC. IT SHALL NOT BE REPRODUCED OR DISCLOSED IN WHOLE OR IN PART OR USED FOR ANY DESIGN OR MANUFACTURE EXCEPT WHEN SUCH USER POSSESSES DIRECT, WRITTEN AUTHORIZATION FROM ROSEN AVIATION, LLC. THIS DRAWING MAY BE COVERED UNDER ONE OR MORE U.S. OR INTERNATIONAL PATENTS, PLEASE CONTACT ROSEN AVIATION FOR SPECIFIC INFORMATION.

ROSEN AVIATION	1020 OWEN LOOP SOUTH EUGENE, OREGON 97402 TEL: (541) 342-3802 FAX: (541) 342-4912	SIZE	DWG NO	REV
		A	9000-011-CD	B
		SCALE	NONE	SHEET 2 OF 2