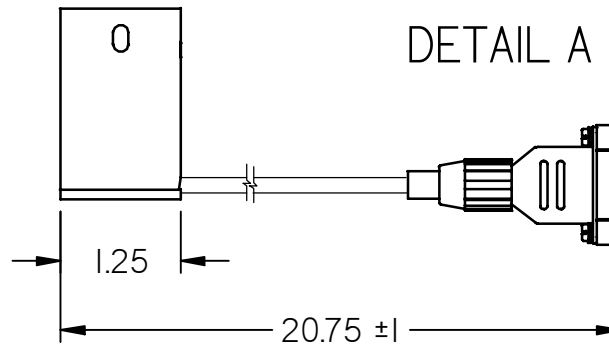
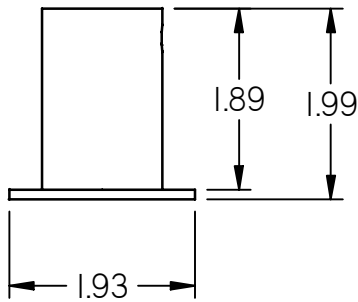
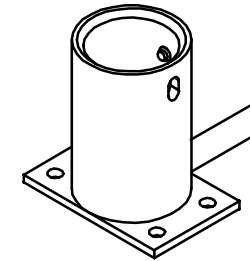
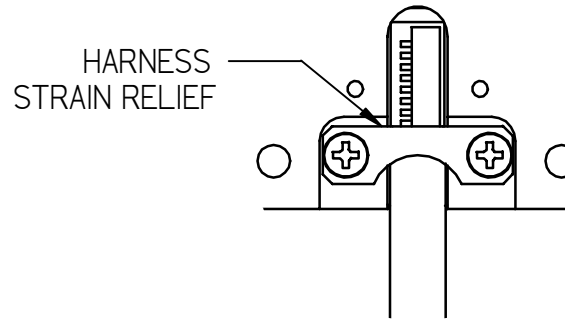
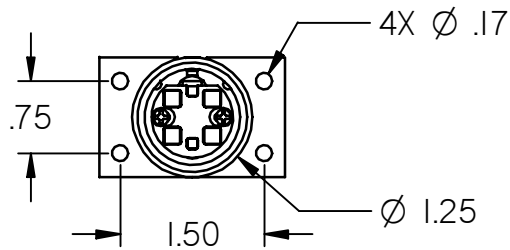


NOTES: (unless otherwise specified)

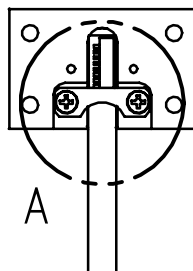
- 1. ASSEMBLY WEIGHT: .20 LBS ± 10%
- 2. ASSEMBLE PER WORK INSTRUCTION 9200-0116-907
- 3. HARNESS OMITTED FROM SOME VIEWS FOR CLARITY

REVISIONS						
ZONE	REV	DESCRIPTION	DATE	BY	CHG NO	APRV
	A	INITIAL DRAWING RELEASE	11/24/08	GJH	EC08482	
A1	B	CHG NOTE 1 FROM .17LBS	01/15/09	GJH	EC09015	DRF
A1, B2	C	DEL NOTE 1, ADD HARNESS LENGTH	11/03/11	DE	EC11675	DRF

ELECTRONIC REVISION CONTROLLED



DETAIL A



REFER TO www.rosenaviation.com FOR THE LATEST REVISION INFORMATION.

THE INFORMATION CONTAINED HEREIN IS PROPRIETARY TO ROSEN AVIATION, LLC. IT SHALL NOT BE REPRODUCED OR DISCLOSED IN WHOLE OR IN PART OR USED FOR ANY DESIGN OR MANUFACTURE EXCEPT WHEN SUCH USER POSSESSES DIRECT, WRITTEN AUTHORIZATION FROM ROSEN AVIATION. THIS DRAWING MAY BE COVERED UNDER ONE OR MORE U.S. OR INTERNATIONAL PATENTS, PLEASE CONTACT ROSEN AVIATION FOR SPECIFIC INFORMATION.

Rosen AVIATION 1020 OWEN LOOP SOUTH
EUGENE, OREGON 97402
TEL: (541) 342-3802 FAX: (541) 342-4912

TITLE
**OUTLINE & INSTALLATION DRAWING,
BASE RECEPTACLE, SLIMLINE POGO,
DB 9 HARNESS, SMALL FOOTPRINT**

FIRST CALLED FOR: (FCF)

SLIMLINE BASE

APPROVALS	INITIAL	DATE
DRAWN BY	GJH	11/10/08
CHECKER	SC	11/24/08
ENGINEER	GJH	11/24/08

DWG NO
0100-016-CD

SIZE	REV
A	C

SCALE 1:2 SHEET 1 OF 1

UNLESS OTHERWISE SPECIFIED DIMENSIONS ARE IN INCHES
.X = ± .1
.XX = ± .03
\approx = ± 5.0°
RADII = ± .020
INTERPRET DIM AND TOL PER ASME Y14.5M - 1994