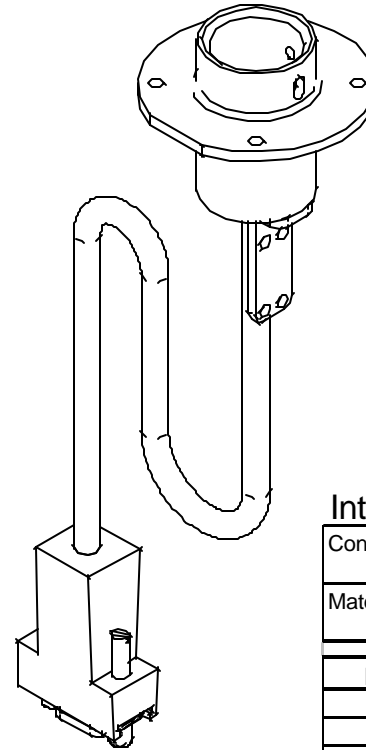
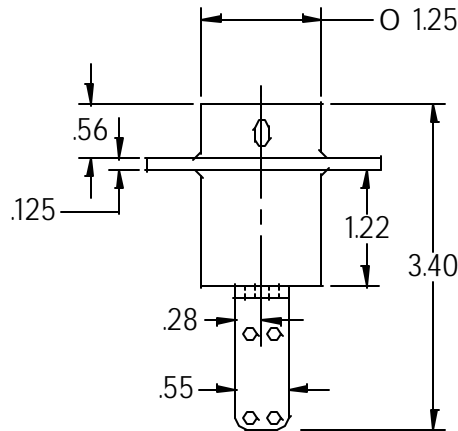
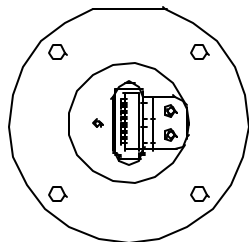
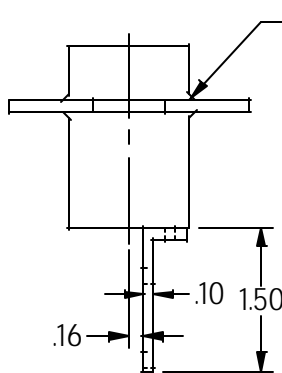
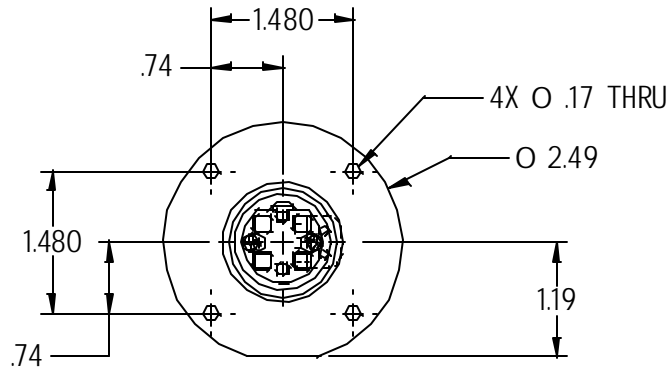


NOTES: (unless otherwise specified)

1. MATERIALS AND INSTRUCTIONS LISTED ON SEPARATE BILL OF MATERIALS.
2. ASSEMBLY WEIGHT: .24 LBS.  $\pm 5\%$
3. HARNESS LENGTH: 22"  $\pm 2$ " (NOT SHOWN)
4. BASE SOLD SEPARATELY.
5. DO NOT PLUG OR UNPLUG MONITOR WHEN POWER IS APPLIED.
6.  $\triangle$  SELECT SWITCH APPLICABLE ONLY WHEN AVAILABLE ON MONITOR
7. MATING CONNECTOR KIT 0300-022 INCLUDED



### Interface Cable Pinout

Connector: 9 Pin Male D-Subminiature  
Positronic SDM0000Z

Mate: 9 Pin Female D-Subminiature  
Positronic SD9F0000X

Pin #	Monitor signal
1	Chassis Ground
2	DC Input
3	DC Return
4 $\triangle$	Select Switch
5 $\triangle$	Select Switch Return
6	Reserved
7	Video Signal Input
8	Video Ground
9	Reserved

**FOR REFERENCE ONLY**

THE INFORMATION CONTAINED HEREIN IS PROPRIETARY TO ROSEN AVIATION DISPLAYS. IT SHALL NOT BE REPRODUCED OR DISCLOSED IN WHOLE OR IN PART OR USED FOR ANY DESIGN OR MANUFACTURE EXCEPT WHEN SUCH USER POSSESSES DIRECT, WRITTEN AUTHORIZATION FROM ROSEN AVIATION DISPLAYS. THIS DRAWING MAY BE COVERED UNDER ONE OR MORE U.S. OR INTERNATIONAL PATENTS. PLEASE CONTACT ROSEN AVIATION DISPLAYS FOR SPECIFIC INFORMATION.



### ROSEN AVIATION DISPLAYS, LLC

1020 OWEN LOOP SOUTH EUGENE, OREGON 97402  
TEL: (541) 342-3802 FAX: (541) 342-4912

UNLESS OTHERWISE SPECIFIED DIMENSIONS ARE IN INCHES

.XX =  $\pm .03$   
.XXX =  $\pm .010$

$\angle = \pm 2.0^\circ$

INTERPRET DIM AND TOL PER ASME Y14.5M - 1994

APPROVALS	INITIAL	DATE	TITLE
DRAWN BY	BKP	12/12/02	SLIMLINE 3 BASE RECEPTACLE ASSEMBLY, POGO, ROUND
CHECKER	JAW	03/31/03	
ENGINEER	BKP	04/03/03	
PRODUCTION	AKB	04/07/03	
QUALITY	PSO	04/01/03	

SIZE  
A

SCALE 1:2

DWG NO  
0100-043

REV  
C

SHEET 1 OF 1