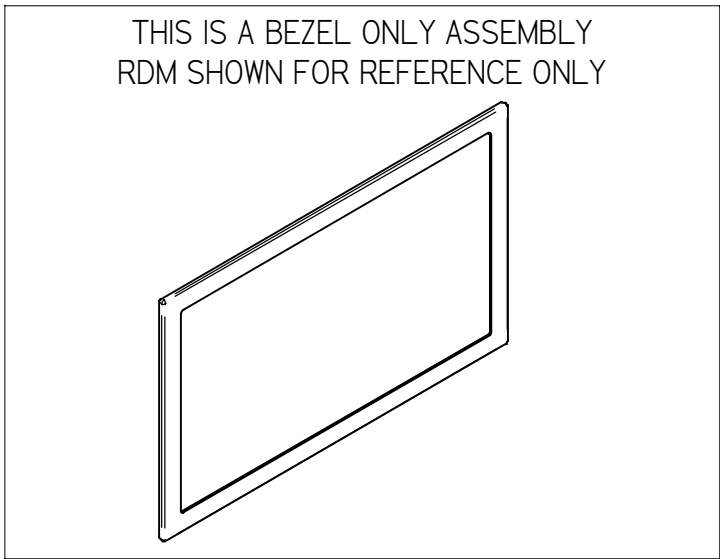
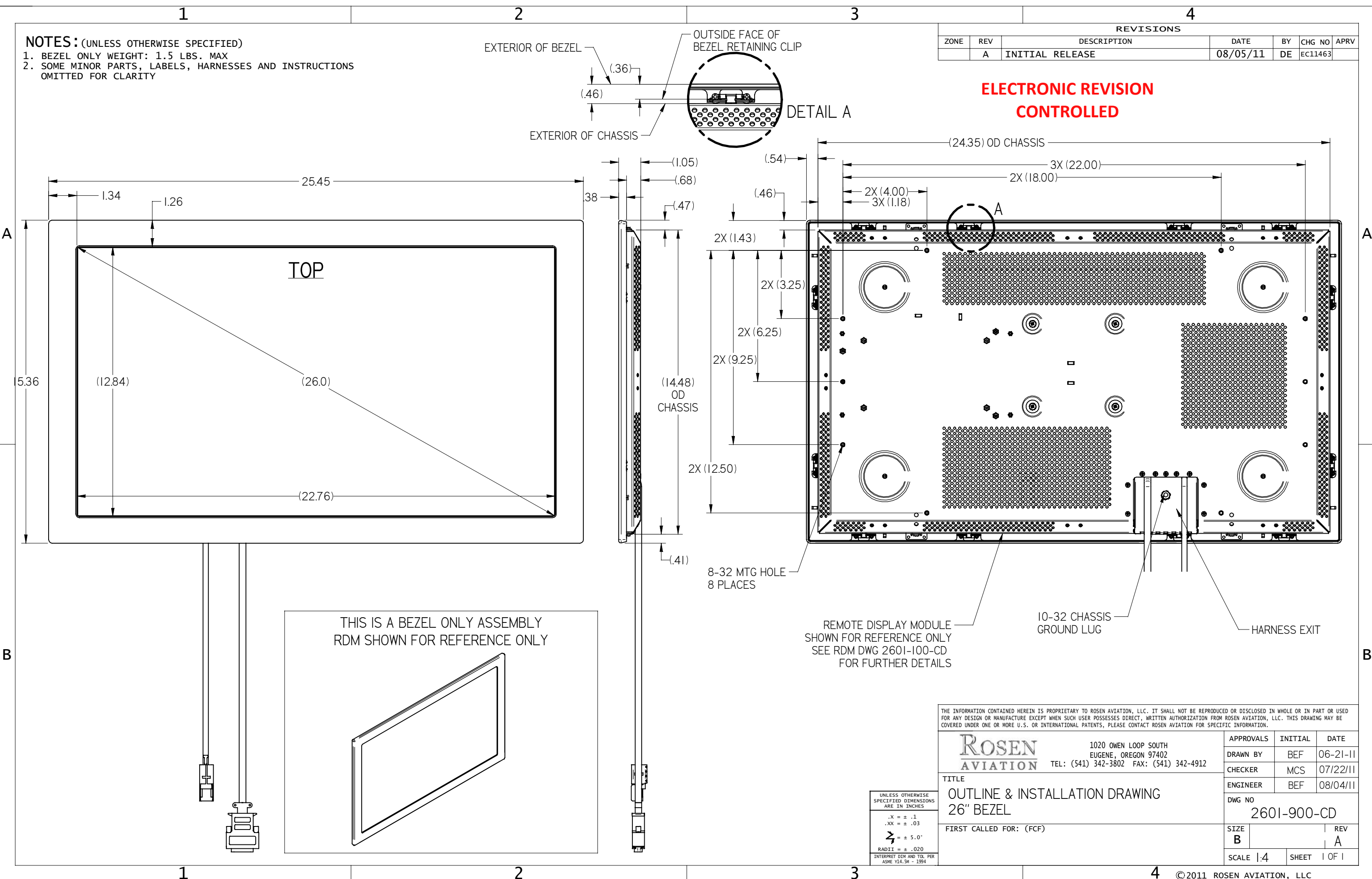


NOTES: (UNLESS OTHERWISE SPECIFIED)
 1. BEZEL ONLY WEIGHT: 1.5 LBS. MAX
 2. SOME MINOR PARTS, LABELS, HARNESSES AND INSTRUCTIONS OMITTED FOR CLARITY

REVISIONS					
ZONE	REV	DESCRIPTION	DATE	BY	CHG NO
	A	INITIAL RELEASE	08/05/11	DE	EC11463

ELECTRONIC REVISION CONTROLLED



REMOTE DISPLAY MODULE
 SHOWN FOR REFERENCE ONLY
 SEE RDM DWG 2601-100-CD
 FOR FURTHER DETAILS

10-32 CHASSIS
 GROUND LUG

HARNESS EXIT

THE INFORMATION CONTAINED HEREIN IS PROPRIETARY TO ROSEN AVIATION, LLC. IT SHALL NOT BE REPRODUCED OR DISCLOSED IN WHOLE OR IN PART OR USED FOR ANY DESIGN OR MANUFACTURE EXCEPT WHEN SUCH USER POSSESSES DIRECT, WRITTEN AUTHORIZATION FROM ROSEN AVIATION, LLC. THIS DRAWING MAY BE COVERED UNDER ONE OR MORE U.S. OR INTERNATIONAL PATENTS, PLEASE CONTACT ROSEN AVIATION FOR SPECIFIC INFORMATION.

	1020 OWEN LOOP SOUTH EUGENE, OREGON 97402 TEL: (541) 342-3802 FAX: (541) 342-4912		APPROVALS	INITIAL	DATE
			DRAWN BY	BEF	06-21-11
		CHECKER	MCS	07/22/11	
		ENGINEER	BEF	08/04/11	
TITLE OUTLINE & INSTALLATION DRAWING 26" BEZEL		DWG NO 2601-900-CD			
FIRST CALLED FOR: (FCF)		SIZE			REV
		B			A
		SCALE	1:4		SHEET 1 OF 1

UNLESS OTHERWISE SPECIFIED DIMENSIONS ARE IN INCHES
 .X = ± .1
 .XX = ± .03
 ⌀ = ± 5.0°
 RADIUS = ± .020
 INTERPRET DIM AND TOL PER ASME Y14.5M - 1994