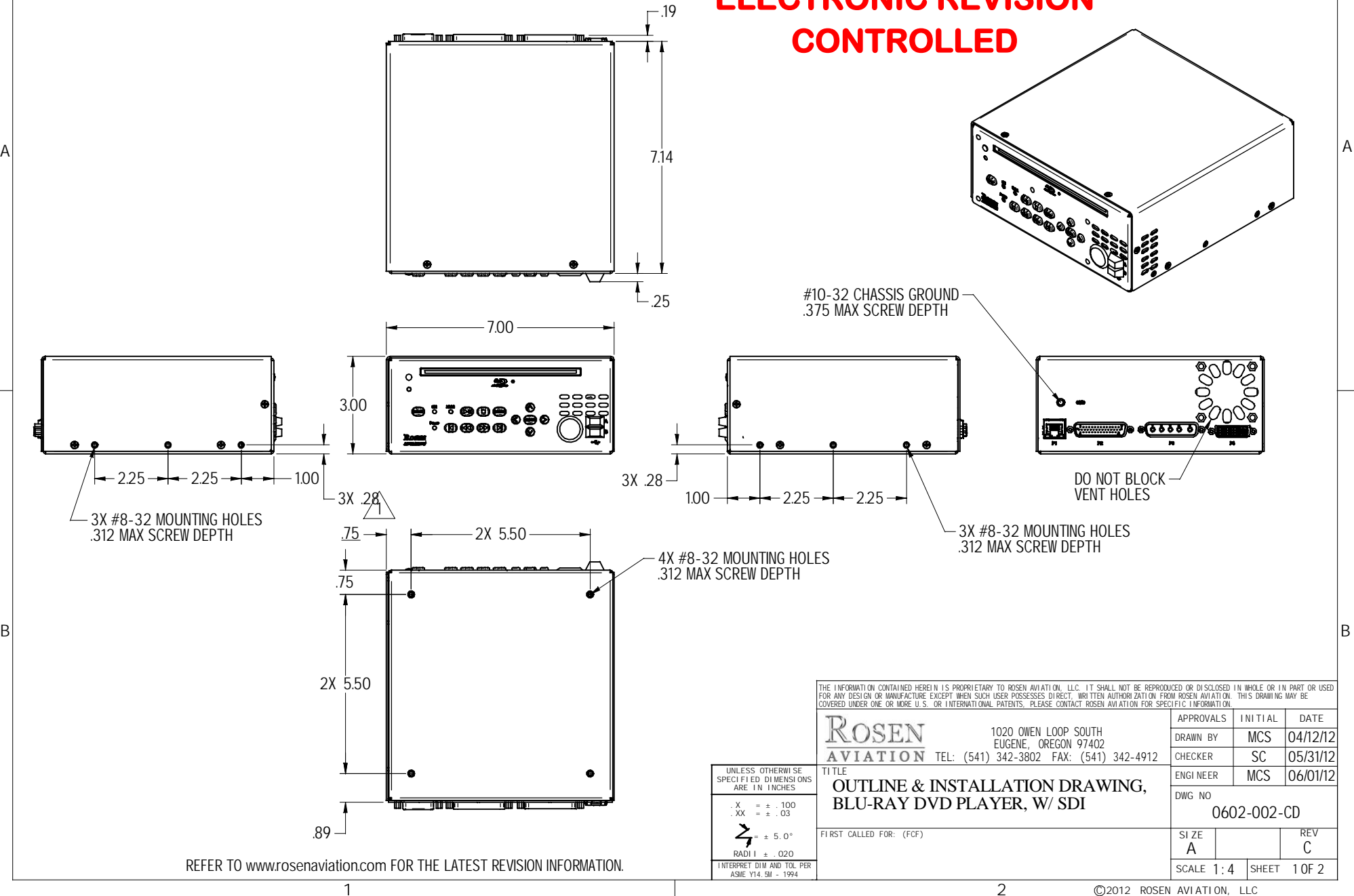


NOTES: (unless otherwise specified)

1. ASSEMBLY WEIGHT: 2.9 LBS ±10%
2. DO NOT PLUG OR UNPLUG PLAYER WHEN POWER IS APPLIED
3. MAINTAIN 1/2" MIN CLEARANCE TO FRONT AND REAR OF PLAYER FOR VENTILATION
4. CARE MUST BE TAKEN TO PREVENT DEBRIS FROM ENTERING VENT HOLES DURING INSTALLATION AND OPERATION
5. CONNECTOR KITS NOT INCLUDED

REVISIONS						
ZONE	REV	DESCRIPTION	DATE	BY	CHG NO	APRV
	A	UPDATED PERFORMANCE SPEC, ADDED MISSING DIMENSIONS	06/04/12	MCS	12-0310	
	B	UPDATE INRUSH CURRENT BASED UPON NEW DO-160G TEST METHOD	11/17/15	LJR	15-0298	BEF
	C	UPDATED FOR ANALOG SUNSET	03/03/16	BEF	16-0057	SC

# ELECTRONIC REVISION CONTROLLED



THE INFORMATION CONTAINED HEREIN IS PROPRIETARY TO ROSEN AVIATION, LLC. IT SHALL NOT BE REPRODUCED OR DISCLOSED IN WHOLE OR IN PART OR USED FOR ANY DESIGN OR MANUFACTURE EXCEPT WHEN SUCH USER POSSESSES DIRECT, WRITTEN AUTHORIZATION FROM ROSEN AVIATION. THIS DRAWING MAY BE COVERED UNDER ONE OR MORE U.S. OR INTERNATIONAL PATENTS. PLEASE CONTACT ROSEN AVIATION FOR SPECIFIC INFORMATION.

**ROSEN AVIATION** 1020 OWEN LOOP SOUTH  
EUGENE, OREGON 97402  
TEL: (541) 342-3802 FAX: (541) 342-4912

APPROVALS	INITIAL	DATE
DRAWN BY	MCS	04/12/12
CHECKER	SC	05/31/12
ENGINEER	MCS	06/01/12

TITLE  
**OUTLINE & INSTALLATION DRAWING,  
BLU-RAY DVD PLAYER, W/ SDI**

DWG NO  
0602-002-CD

FIRST CALLED FOR: (FCF)

SI ZE	REV
A	C

UNLESS OTHERWISE SPECIFIED DIMENSIONS ARE IN INCHES	
.X	= ± .100
.XX	= ± .03
R	= ± 5.0°
RADII	= ± .020
INTERPRET DIM AND TOL PER ASME Y14.5M - 1994	

SCALE 1:4 SHEET 1 OF 2

### Main Interface Connector

Connector Type: DB44 HD Male  
Rosen Connector Kit: 0300-038

Pin #	Function	Pin #	Function
1	28V DC Return	23	Volume-Controlled Front Audio Return
2	IR+5V Out*	24	Volume-Controlled Surround Audio Return
3	RS485 +	25	Fixed-Level Left Audio Return
4	RS485 +	26	Fixed-Level Right Audio Return
5	GND (RS485 Return)	27	Volume-Controlled Center/Bass Audio Return
6	NC	28	Volume-Controlled Rear Audio Return
7	NC	29	Pilot Override
8	Volume-Controlled Left Front Audio (line-level)	30	NC
9	Volume-Controlled Left Surround Audio (line-level)	31	28V DC Return
10	Fixed-Level Left Audio (line-level)****	32	External IR In **
11	Volume-Controlled Center Audio (line-level)	33	RS232-TX Control
12	Volume-Controlled Left Rear Audio (line-level)	34	RS232-RX Control
13	GND (RS485 Return)	35	GND (RS232 Return)
14	Discrete Relay Output ***	36	NC
15	GND (External +5Vdc Return)	37	NC
16	+28V DC In	38	Volume-Controlled Right Front Audio (line-level)
17	+28V DC In	39	Volume-Controlled Right Surround Audio (line-level)
18	External +5 VDC Out	40	Fixed-Level Right Audio (line-level)****
19	RS485 -	41	Volume-Controlled Bass Subwoofer Audio (line-level)
20	RS485 -	42	Volume-Controlled Right Rear Audio (line-level)
21	GND (RS485 Return)	43	NC
22	NC	44	GND (External IR Return)

\* IR + 5V Out is usually connected to an external IR receiver module, 100 mA maximum.

\*\* Do Not connect an unmodulated IR receiver such as a pin diode from an IR repeater.

Do not connect any device that has a signal voltage greater than 5V.

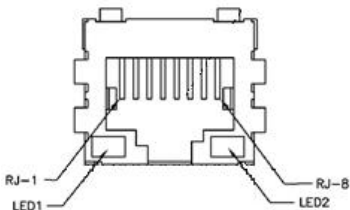
\*\*\* Discrete Relay Output switches to GND when activated

\*\*\*\* Fixed-level can be adjusted

\*+ Analog Sunset See Tech Manual

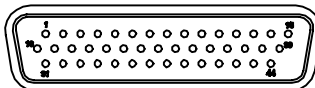
### Ethernet Connectors

Pin #	Function
1	TX+
2	TX-
3	RX+
4	NC
5	NC
6	RX-
7	NC
8	NC



P1 (ETHERNET)

P2 (MAIN)



### Performance Specifications (Reference)

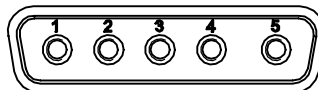
Power Requirements	
Operational Voltage Range	18.0 - 32.0 VDC
Max Current at Nominal Voltage	0.90 A @ 28.0 VDC
Inrush Peak	15 A
Inrush Duration	13 ms

Environmental Specifications	
Operating Temperature	0°C to 45°C
Altitude	A1 (15,000 ft)
Humidity	A
Vibration	S curve B
Power Input	CAT Z
Radio Frequency Susceptibility	CAT T
Emission of RF Energy	CAT M

### SDI/CVBS/SPDIF Connector

Connector Type: 5W5 Male  
Rosen Connector Kit: 0300-040

Pin #	Function
1	S/PDIF Digital Audio
2	CVBS2 Composite *+
3	SDI_2 (SCRAMBLED)
4	SDI_1 (SCRAMBLED)
5	CVBS1 Composite *+



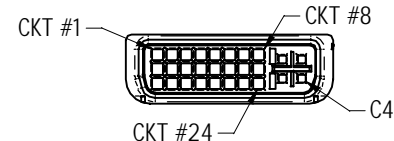
P3 (SDI/CVBS/SPDIF)

2

### Component/Digital Connector

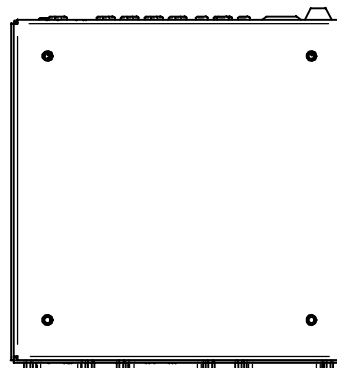
Connector Type: DVI/H Receptacle  
Rosen Connector Kit: 0300-029

Analog Component Video			
Digital DVI/HDMI Audio & Video			
Pin #	Function	Pin #	Function
1	TMDS Data2-	16	Hot Plug Detect
2	TMDS Data2+	17	TMDS Data0-
3	TMDS Data2 Shield	18	TMDS Data0+
4	NC	19	TMDS Data0 Shield
5	NC	20	NC
6	DDC Clock [SCL]	21	NC
7	DDC Data [SDA]	22	TMDS Clock Shield
8	NC	23	TMDS Clock +
9	TMDS Data1-	24	TMDS Clock -
10	TMDS Data1+	C1	Analog Component Pr *+
11	TMDS Data1 Shield	C2	Analog Component Y *+
12	NC	C3	Analog Component Pb *+
13	NC	C4	NC
14	+5 V Power Out	C5	Analog Component Return
15	Ground (for +5 V)		

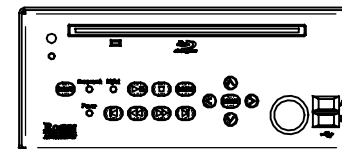


P4 (COMPONENT/DIGITAL)

## Acceptable Mounting Orientations



VERTICAL +/- 15°



HORIZONTAL +/- 15°

THE INFORMATION CONTAINED HEREIN IS PROPRIETARY TO ROSEN AVIATION, LLC. IT SHALL NOT BE REPRODUCED OR DISCLOSED IN WHOLE OR IN PART OR USED FOR ANY DESIGN OR MANUFACTURE EXCEPT WHEN SUCH USER POSSESSES DIRECT WRITTEN AUTHORIZATION FROM ROSEN AVIATION, LLC. THIS DRAWING MAY BE COVERED UNDER ONE OR MORE U.S. OR INTERNATIONAL PATENTS. PLEASE CONTACT ROSEN AVIATION FOR SPECIFIC INFORMATION.

ROSEN AVIATION	1020 OWEN LOOP SOUTH EUGENE, OREGON 97402 TEL: (541) 342-3802 FAX: (541) 342-4912	SIZE	DWG NO	REV
		A	0602-002-CD	C
		SCALE	NONE	SHEET 2 OF 2

1

2