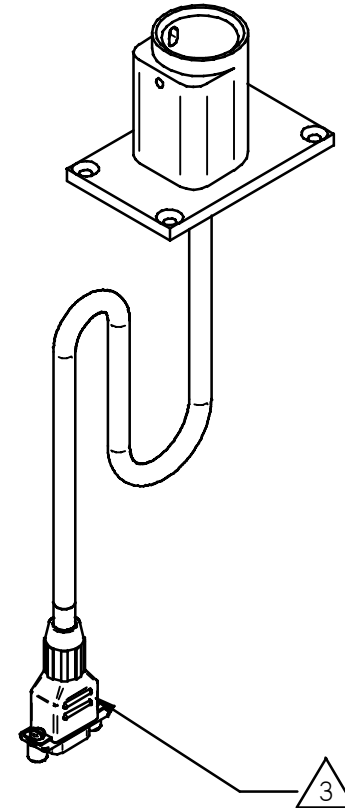
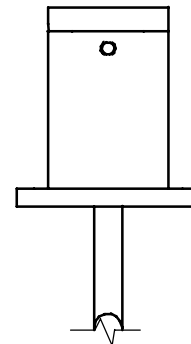
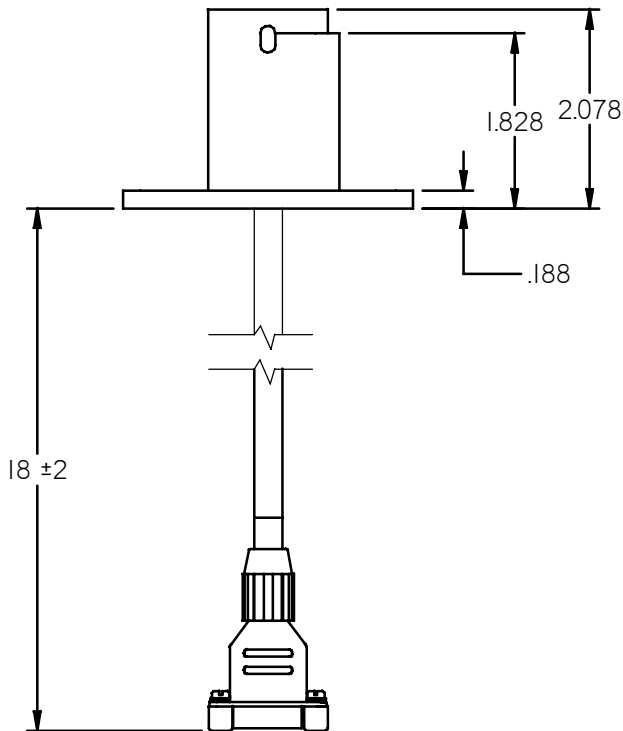
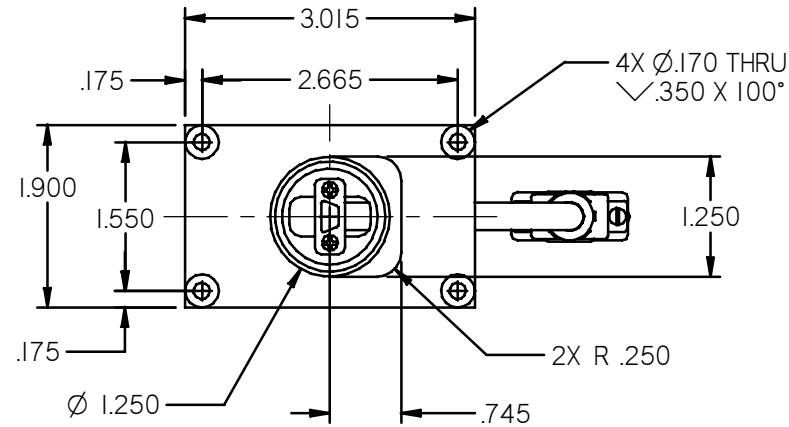


NOTES: (unless otherwise specified)

1. ALL MATERIALS AND INSTRUCTIONS LISTED ON BOM
2. ASSEMBLY WEIGHT: .34 LBS. ±5%
3. CONNECTOR: 9 PIN MALE D-SUBMINIATURE
4. MATING CONNECTOR: 9 PIN FEMALE D-SUBMINIATURE
5. HARNESS OMITTED FROM SOME VIEWS FOR CLARITY
6. REFER TO MONITOR DRAWING FOR PINOUT
7. MATING CONNECTOR KIT (0300-022) INCLUDED.



**FOR REFERENCE ONLY**

THE INFORMATION CONTAINED HEREIN IS PROPRIETARY TO ROSEN AVIATION, LLC. IT SHALL NOT BE REPRODUCED OR DISCLOSED IN WHOLE OR IN PART OR USED FOR ANY DESIGN OR MANUFACTURE EXCEPT WHEN SUCH USER POSSESSES DIRECT, WRITTEN AUTHORIZATION FROM ROSEN AVIATION. THIS DRAWING MAY BE COVERED UNDER ONE OR MORE U.S. OR INTERNATIONAL PATENTS. PLEASE CONTACT ROSEN AVIATION FOR SPECIFIC INFORMATION.

<b>Rosen AVIATION</b> 1020 OWEN LOOP SOUTH EUGENE, OREGON 97402 TEL: (541) 342-3802 FAX: (541) 342-4912		APPROVALS	INITIAL	DATE
		DRAWN BY	JAW	12/03/02
TITLE <b>BASE RECEPTACLE, SLIMLINE, DB9          HARNESS, RNVAP FOOTPRINT, ROTATED</b>		CHECKER	BKP	12/05/02
		ENGINEER	JW	12/06/02
FIRST CALLED FOR: (FCF) <b>SLIMLINE BASE</b>		DWG NO 0100-014		
		SIZE A		REV F
SCALE 1:2		SHEET 1 OF 1		

UNLESS OTHERWISE SPECIFIED DIMENSIONS ARE IN INCHES

.XX = ± .020  
.XXX = ± .005

= ± 1.0°

INTERPRET DIM AND TOL PER ASME Y14.5M - 1994

REVISIONS						
ZONE	REV	DESCRIPTION	DATE	BY	CHG NO	APRV
-	A	PRODUCTION RELEASE	11/14/02	JEA	02496	-
-	B	CORRECT NOTES, VIEW, DIM'S, TOL	12/10/03	GJH	03340	JW
-	C	CORRECT .pdf PER RTS AUDIT	03/29/04	GJH	04095C	SW
-	D	ADD 0300-022 TO BOM	07/14/04	GJH	04190	DK
-	F	ADD TAMPER EVIDENT LABEL TO BOM	01/20/06	GJH	EC06003	JW