

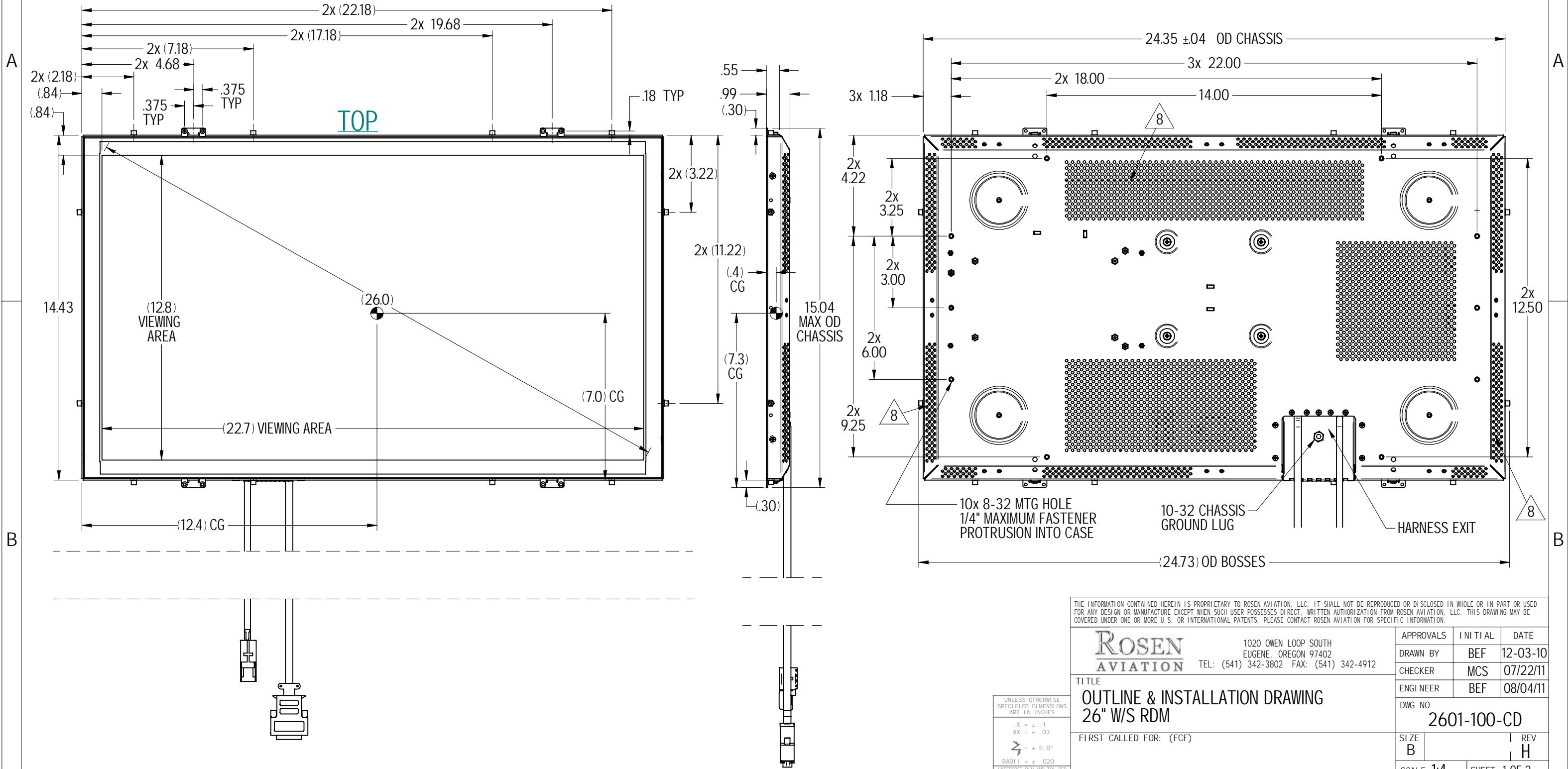
**NOTES: (UNLESS OTHERWISE SPECIFIED)**

- ASSEMBLY WEIGHT: 10.25 LBS MAX
- HARNES LENGTH: SEE SHEET 2
- OBSERVE ESD SAFE HANDLING PRACTICES
- SOME MINOR PARTS, LABELS, HARNESSES AND INSTRUCTIONS OMITTED FOR CLARITY
- VENTING REQUIREMENTS: 1/2" CLEARANCE TO TOP AND BOTTOM VENT HOLES OR 1/2" TO BACK OF UNIT
- MOUNTING REQUIREMENTS: MINIMUM NUMBER OF FASTENERS REQUIRED (4)EA 8-32 ON BACK OF UNIT OR (8)EA 4-40
- CONNECTOR KITS NOT INCLUDED

8 BACK AND SIDE VENT HOLES HAVE BEEN REMOVED ON 2601-100 MOD 01. TOP AND BOTTOM VENT HOLE REMAIN. CLEARANCE REQUIREMENTS PER NOTE 5 APPLY TO ALL MODS

**ELECTRONIC REVISION CONTROLLED**

REVISIONS					
ZONE	REV	DESCRIPTION	DATE	BY	CHG NO
	A	INITIAL DRAWING RELEASE	08/05/11	DE	EC11463
PG3	B	UPD INTERCONNECT CABLE RECOMMENDATION	03/06/12	DE	12-0132
PG3	C	CORRECT PICTORIAL DEPICTION OF CABLES	04/06/12	GJH	12-0211
PG2	D	ADD INTERCONNECT CABLE REF, DEL SHEET 3	07/11/12	DE	12-0402
PG2	F	CORRECT CONNECTOR CALLOUT P4 IS FEMALE	02/26/14	DE	14-0053
A1	G	ADD 'MAX' TO NOTE 1	05/23/14	DE	14-0197
A1/SH2	H	ADD NOTE 8. ADD AIRCRAFT POWER NOTE TO P3 PIN-OUT TABLE, UPD PERFORMANCE SPEC. TABLE	4/6/15	MCS	15-0129



THE INFORMATION CONTAINED HEREIN IS PROPRIETARY TO ROSEN AVIATION, LLC. IT SHALL NOT BE REPRODUCED OR DISCLOSED IN WHOLE OR IN PART OR USED FOR ANY DESIGN OR MANUFACTURE EXCEPT WHEN SUCH USER POSSESSES DIRECT, WRITTEN AUTHORIZATION FROM ROSEN AVIATION, LLC. THIS DRAWING MAY BE COVERED UNDER ONE OR MORE U.S. OR INTERNATIONAL PATENTS. PLEASE CONTACT ROSEN AVIATION FOR SPECIFIC INFORMATION.			
<b>ROSEN AVIATION</b>		1020 OWEN LOOP SOUTH EUGENE, OREGON 97402 TEL: (541) 342-3802 FAX: (541) 342-4912	
TITLE	APPROVALS	INITIAL	DATE
<b>OUTLINE &amp; INSTALLATION DRAWING</b> 26" W/S RDM	DRAWN BY	BEF	12-03-10
	CHECKER	MCS	07/22/11
	ENGINEER	BEF	08/04/11
FIRST CALLED FOR: (FCF)	DWG NO		REV
	2601-100-CD		H
	SCALE 1:4	SHEET 1 OF 2	

UNLESS OTHERWISE SPECIFIED DIMENSIONS ARE IN INCHES  
 .X = ± .1  
 .XX = ± .03  
 R = ± 5.0°  
 RADI = ± .020  
 INTERPRET DIM AND TOL PER ASME Y14.5M - 1994

**PERFORMANCE SPECIFICATIONS (REF)**

**LCD Performance \***

Screen Resolution (pixels)	1920 x 1080
Display Viewing Area (mm)	575.77 X 323.71
Horizontal Viewing Angle	±89°
Vertical Viewing Angle	±89°
Contrast Ratio (Min)	700:1
Screen Brightness (Typical)	350 cd/m²

**Nominal Power Dissipation\*\***

Power Dissipation	55 W
-------------------	------

**Environmental Specifications**

Operating Temperature	0°C - 50°C
Altitude	15,000ft
Humidity	90%RH
Vibration	1.48 grms
Power Input	DO-160E Cat Z(A)
Radio Frequency	DO-160F Cat T
Emission of RF Energy	DO-160F Cat M

\* LCD Manufacturer Spec

\*\* See 0700-103-CD drawing for additional power information

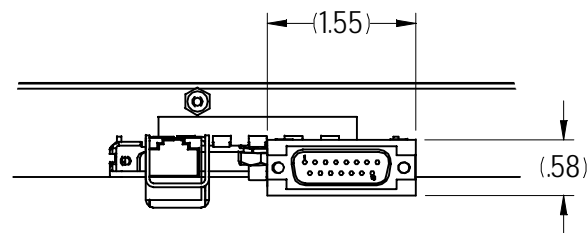
**Connector Plug Pinout - 15 Position (P3)**

Connector: 15 Pin Male, Tyco 205206-3
Mate: 15 Pin Female Tyco 205205-2 Contact: 66504-3 Connector Kit 0300-053

Pin #	Monitor signal
1	Reserved
2	Reserved
3	Reserved
4***	PWR_POS
5***	PWR_POS
6	Reserved
7	Ground
8	RS232_RX
9	Reserved
10	Reserved
11	Reserved
12***	PWR_NEG
13***	PWR_NEG
14	Reserved
15	RS232_TX

\*\*\* DO NOT CONNECT TO AIRCRAFT POWER

FOR INTERCONNECT CABLE RECOMMENDATIONS SEE ROSEN DOCUMENT: 105821



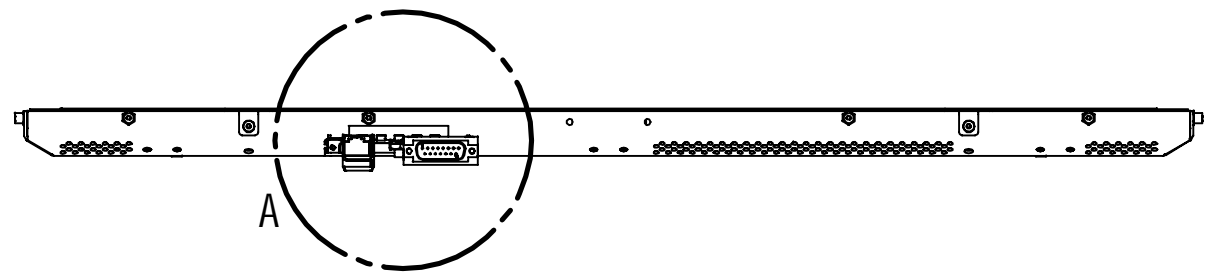
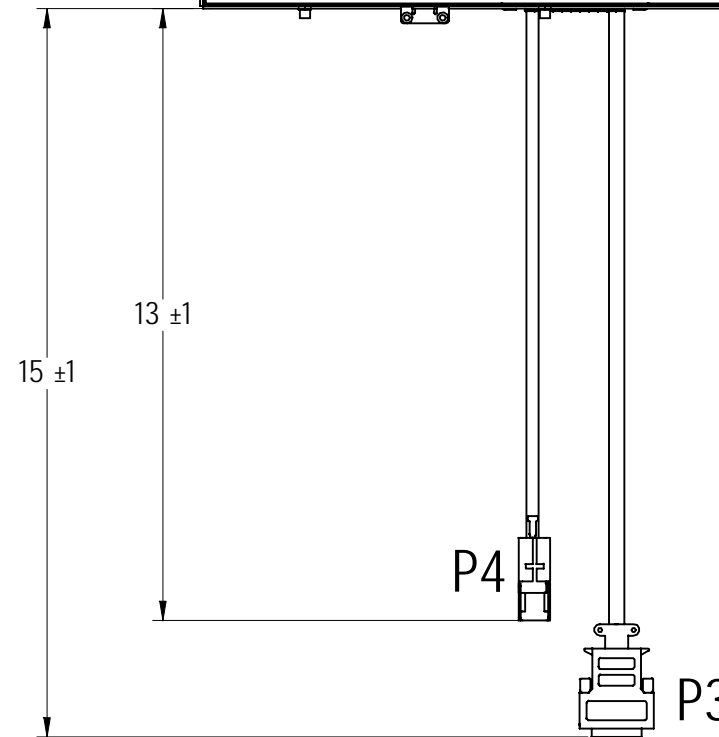
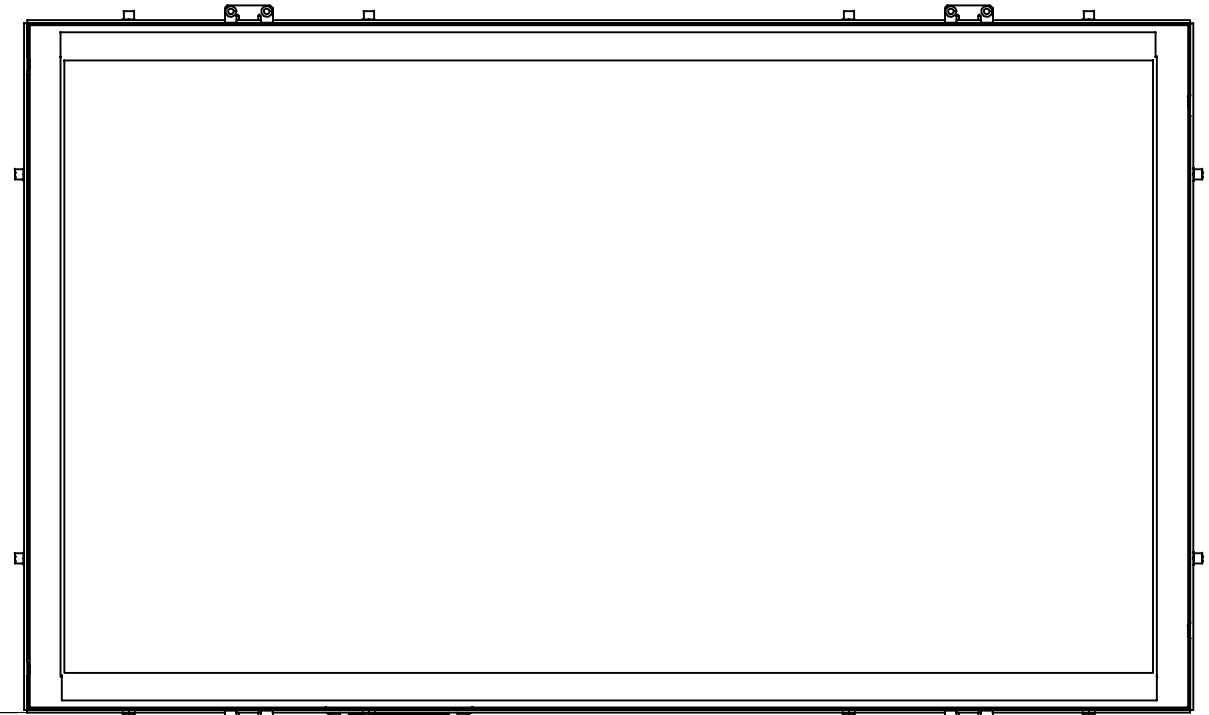
DETAIL A  
CONNECTOR DIMENSIONS

**Female RJ-45 (P4)**

Mates with male RJ-45  
Connector Kit 0300-050

Pin #	Monitor signal
1	CAT6_+12V
2	Ground
3	CAT6_HTPDN
4	CAT6_TX0_N
5	CAT6_TX0_P
6	CAT6_LOCKN
7	CAT6_TX1_N
8	CAT6_TX1_P
Shell	Ground

FOR INTERCONNECT CABLE RECOMMENDATIONS SEE ROSEN DOCUMENT: 105821



THE INFORMATION CONTAINED HEREIN IS PROPRIETARY TO ROSEN AVIATION, LLC. IT SHALL NOT BE REPRODUCED OR DISCLOSED IN WHOLE OR IN PART OR USED FOR ANY DESIGN OR MANUFACTURE EXCEPT WHEN SUCH USER POSSESSES DIRECT, WRITTEN AUTHORIZATION FROM ROSEN AVIATION, LLC. THIS DRAWING MAY BE COVERED UNDER ONE OR MORE U.S. OR INTERNATIONAL PATENTS. PLEASE CONTACT ROSEN AVIATION FOR SPECIFIC INFORMATION.

	1020 OWEN LOOP SOUTH EUGENE, OREGON 97402 TEL: (541) 342-3802 FAX: (541) 342-4912	SIZE B	DWG NO 2601-100-CD	REV H
	SCALE NONE	SHEET 2 OF 2		