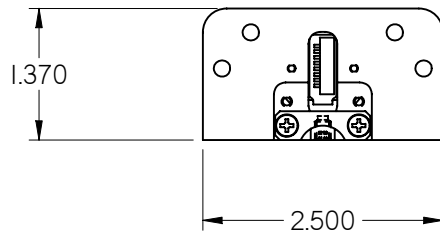
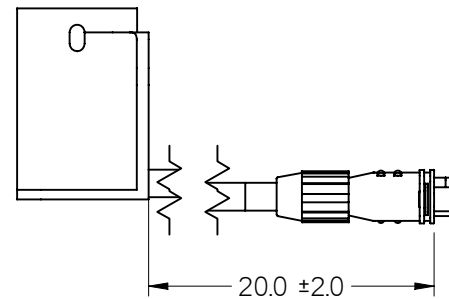
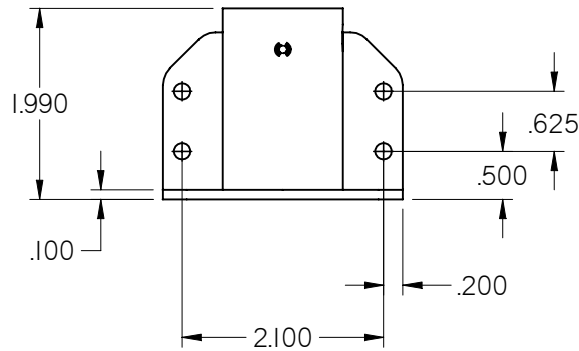
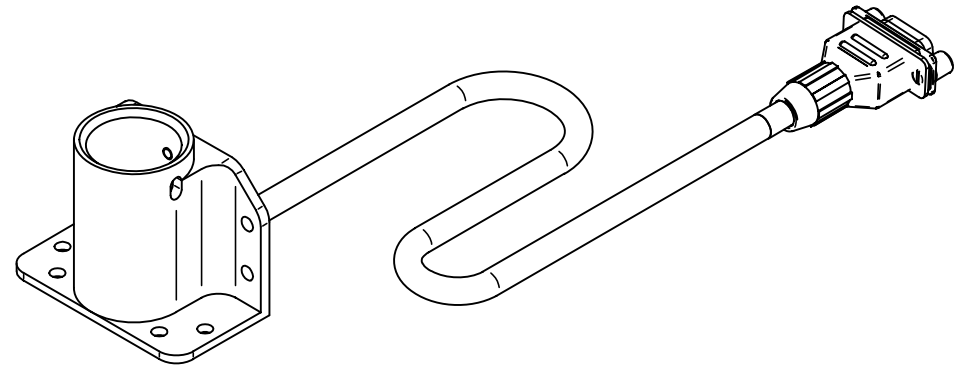
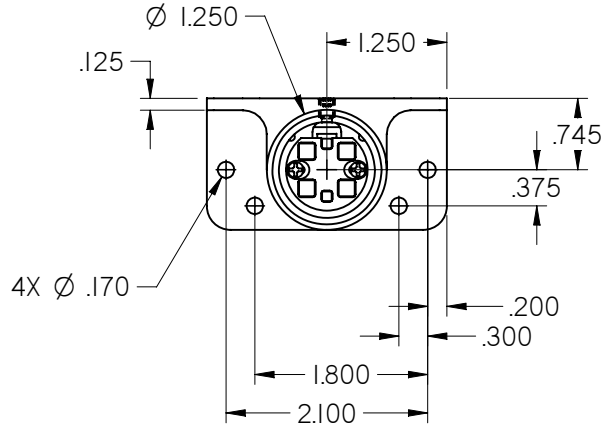


NOTES: (unless otherwise specified)

- 1. ASSEMBLY WEIGHT: .263 lbs ± 10%
- 2. HARNESS OMITTED FROM SOME VIEWS FOR CLARITY
- 3. CONNECTOR: 9 PIN MALE D-SUB
MATE: 9 PIN FEMALE D-SUB
MATING CONNECTOR KIT (0300-022) INCLUDED
- 4. REFER TO OUTLINE & INSTALLATION DRAWING OF MONITOR ASSEMBLY FOR SPECIFIC PINOUT INFORMATION

REVISIONS						
ZONE	REV	DESCRIPTION	DATE	BY	CHG NO	APRV
	A	INITIAL DRAWING RELEASE	05/19/09	GJH	EC09098	
	B	UPDATE WEIGHT, INC FAI REDLINES	06/07/10	DE	EC10298	GJH

ELECTRONIC REVISION CONTROLLED



REFER TO www.rosenaviation.com FOR THE LATEST REVISION INFORMATION.

THE INFORMATION CONTAINED HEREIN IS PROPRIETARY TO ROSEN AVIATION, LLC. IT SHALL NOT BE REPRODUCED OR DISCLOSED IN WHOLE OR IN PART OR USED FOR ANY DESIGN OR MANUFACTURE EXCEPT WHEN SUCH USER POSSESSES DIRECT, WRITTEN AUTHORIZATION FROM ROSEN AVIATION. THIS DRAWING MAY BE COVERED UNDER ONE OR MORE U.S. OR INTERNATIONAL PATENTS. PLEASE CONTACT ROSEN AVIATION FOR SPECIFIC INFORMATION.

ROSEN AVIATION TEL: (541) 342-3802 FAX: (541) 342-4912
 1020 OWEN LOOP SOUTH
 EUGENE, OREGON 97402

TITLE
**OUTLINE & INSTALLATION DRAWING,
 BASE RECEPTACLE, SLIMLINE,
 POGO, DB9 HARNESS**

FIRST CALLED FOR: (FCF)

SLIMLINE BASE

APPROVALS	INITIAL	DATE
DRAWN BY	GJH	03/23/09
CHECKER	SC	05/18/09
ENGINEER	DRF	05/19/09

DWG NO
0100-041-CD

SIZE	REV
A	B

SCALE 1:2 SHEET 1 OF 1

UNLESS OTHERWISE SPECIFIED DIMENSIONS ARE IN INCHES
 .XX = ± .020
 .XXX = ± .005
 = ± 1.0°
 INTERPRET DIM AND TOL PER ASME Y14.5M - 1994