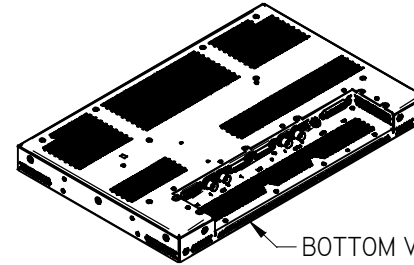


NOTES: (unless otherwise specified)

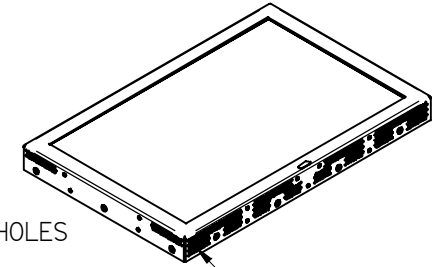
- 1. ASSEMBLY WEIGHT: 9.1 LBS. ±10%
- 2. SOME MINOR PARTS, LABELS, HARNESSES AND INSTRUCTIONS OMITTED FOR CLARITY
- 3. MONITOR MUST BE MOUNTED USING ALL MOUNTING HOLES ON SIDES OR 4 BACK MOUNTING HOLES AT MINIMUM
- 4. REMOVE #10-32 FLAT HEAD SCREWS AS NEEDED TO ACCESS MOUNTING HOLES. DO NOT EXCEED .375 INCH INSERTION DEPTH
- 5. FREE AIR VENTILATION REQUIRED. INSTALLATION REQUIRES EITHER AN AIR GAP OF 1 INCH AND A MINIMUM OF 2.25 SQUARE INCHES VENT AREA TO THE CABIN ABOVE AND BELOW THE MONITOR OR A MINIMUM OF 1700 CUBIC INCHES AROUND THE MONITOR IF INSTALLED IN A BULKHEAD. 1/2 INCH OR GREATER GAP BETWEEN BACK OF MONITOR AND BULKHEAD IS SUGGESTED FOR OPTIMAL PERFORMANCE.
- 6. DO NOT PLUG OR UNPLUG CONNECTORS WHILE POWER IS APPLIED
- 7. CARE MUST BE TAKEN TO PREVENT DEBRIS FROM ENTERING ANY MONITOR OPENINGS DURING INSTALLATION AND OPERATION
- 8. CONNECTOR KITS NOT INCLUDED

ELECTRONIC REVISION CONTROLLED

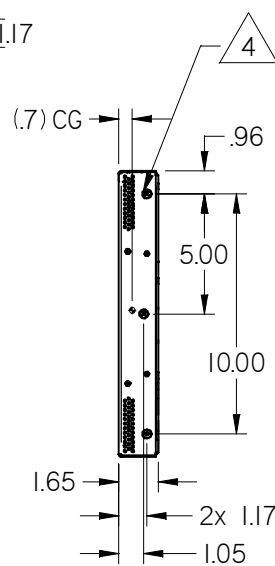
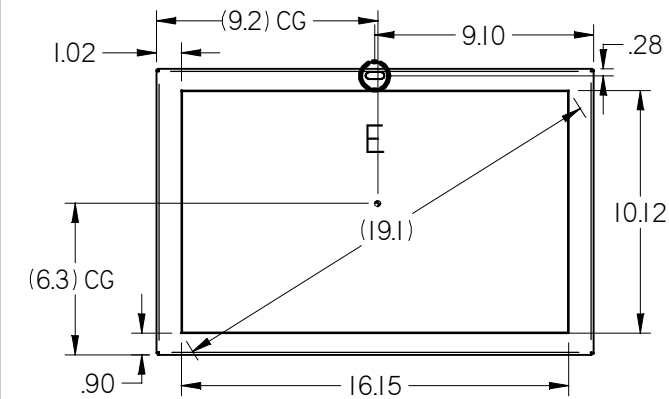
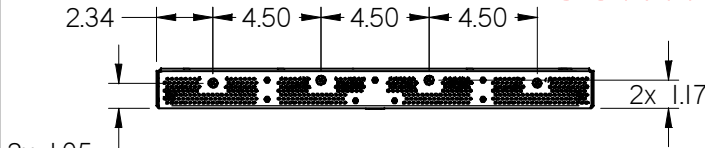
REVISIONS						
ZONE	REV	DESCRIPTION	DATE	BY	CHG NO	APRV
	A	INITIAL DRAWING RELEASE	11/16/11	DE	EC11678	
PG2	B	UPD & CLARIFY MAIN CONNECTOR INTERFACE	05/02/12	DE	12-0254	MCS
B2	C	ADD IR LOCATION DETAIL	05/30/12	DE	12-0307	MCS
B1	D	ADDED CoM LOCATION	06/20/13	DE	13-0244	MCS



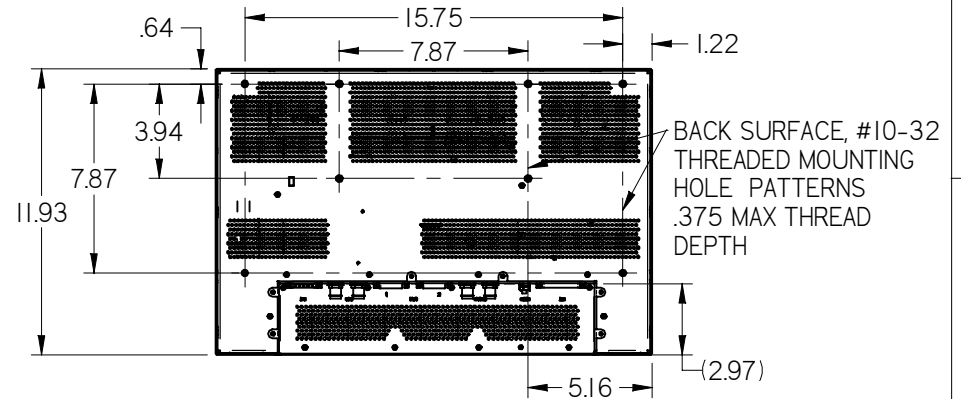
BOTTOM VENT HOLES DO NOT BLOCK



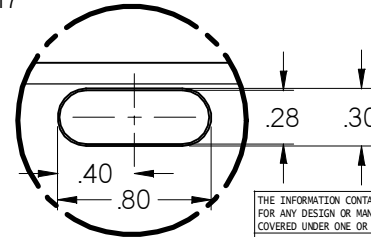
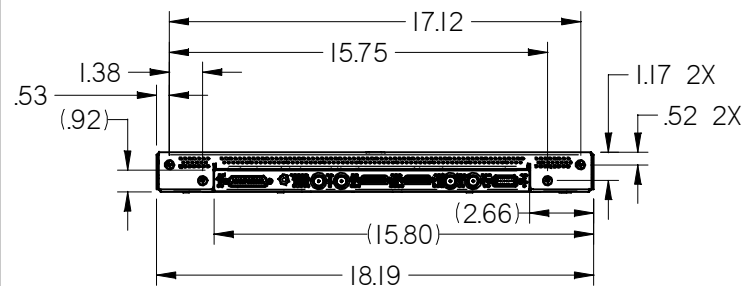
TOP VENT HOLES DO NOT BLOCK



3 PLACES BOTH SIDES



BACK SURFACE, #10-32 THREADED MOUNTING HOLE PATTERNS .375 MAX THREAD DEPTH



DETAIL E

THE INFORMATION CONTAINED HEREIN IS PROPRIETARY TO ROSEN AVIATION, LLC. IT SHALL NOT BE REPRODUCED OR DISCLOSED IN WHOLE OR IN PART OR USED FOR ANY DESIGN OR MANUFACTURE EXCEPT WHEN SUCH USER POSSESSES DIRECT, WRITTEN AUTHORIZATION FROM ROSEN AVIATION. THIS DRAWING MAY BE COVERED UNDER ONE OR MORE U.S. OR INTERNATIONAL PATENTS. PLEASE CONTACT ROSEN AVIATION FOR SPECIFIC INFORMATION.

Rosen AVIATION
 1020 OWEN LOOP SOUTH
 EUGENE, OREGON 97402
 TEL: (541) 342-3802 FAX: (541) 342-4912

TITLE
OUTLINE & INSTALLATION DRAWING, 19" MONITOR ALL-IN-ONE

FIRST CALLED FOR: (FCF)

APPROVALS	INITIAL	DATE
DRAWN BY	MCS	10/28/11
CHECKER	DE	11/16/11
ENGINEER	MCS	11/18/11

DWG NO
1900-003-CD

SIZE	REV
A	D

SCALE N.T.S. SHEET 1 OF 2

REFER TO www.rosenaviation.com FOR THE LATEST REVISION INFORMATION.

PERFORMANCE SPECIFICATIONS (REF)

LCD Performance	
Screen Resolution (pixels)	1440 x 900
Video Formats Supported	480i/576i through 1080p
VESA Formats	VGA through WUXGA
Active Viewing Area (mm)	408.24mm (H) x 255.15mm
*Horizontal Viewing Angle	+/- 80°
*Vertical Viewing Angle	+/- 80°
Contrast Ratio (Typical)	1000 : 1
Screen Brightness (Typical)	300 cd/m ²

Power Requirements	
Nominal Voltage/Current	28 VDC/ 1 AMP
Inrush Current	6 AMP for 500µsec
Op Voltage Range	18-32 VDC
Maximum Current Draw	2.2 AMP
Power Consumption	28W (NOM)

Environmental Specifications	
Suggested Installation Temperature	0°C - 50°C
Operating Temperature	DO-160F Cat A1 (-15 to 55°C)
Altitude	15,000ft
Humidity	95%RH
Vibration	1.48 grms
Power Input	DO-160F Cat Z(A)
Radio Frequency Susceptibility	DO-160F Cat T
Emission of RF Energy	DO-160F Cat M

* LCD Manufacturer's Specifications

1 Main Interface Connector

Pin #	Function
1	IR+5V_OUT
2	SELECT_SW_IN
3	Reserved
4	PWR_Control_In
5	Reserved
6	IR_GND
7	Discrete Relay Output/Error State*
8	GND
9	GND
10	RS-232_CONTROL_GND
11	RS-232-TX CONTROL
12	RS-232-RX CONTROL
13	RS-485-P
14	RS-485-N
15	RS-485-P
16	RS-485-N
17	GND
18	EXT_IR-IN
19	Reserved
20	NC
21	Reserved
22	Discrete Relay Input/Error State*
23	RC_ENABLE
24	RS-232-TX DEBUG
25	RS-232-RX DEBUG
26	RS-232 DEBUG GND

CVBS Connectors

Pin #	Function
Center Pin	CVBS - (Composite)
Outer Ring	CVBS Return

SDI Connectors

Pin #	Function
Center Pin	SDI - (HD/SD)
Outer Ring	SDI Return

2

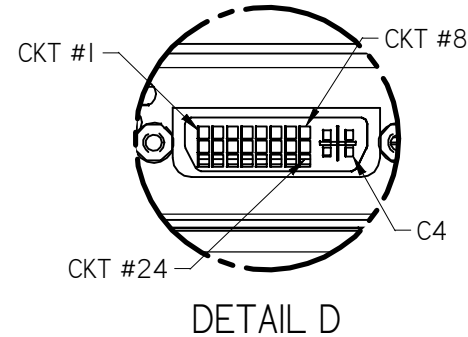
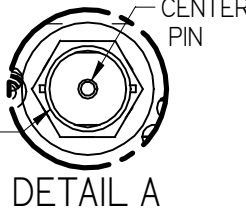
Component/Digital Connector

Pin #	Function	Pin #	Function
1	TMD5 Data2-	16	Hot Plug Detect
2	TMD5 Data2+	17	TMD5 Data0-
3	TMD5 Data2 Shield	18	TMD5 Data0+
4	Reserved	19	TMD5 Data0 Shield
5	Reserved	20	Reserved
6	DDC Clock [SCL]	21	Reserved
7	DDC Data [SDA]	22	TMD5 Clock Shield
8	Analog Vertical Sync	23	TMD5 Clock +
9	TMD5 Data1-	24	TMD5 Clock -
10	TMD5 Data1+	C1	Analog Red (or Component Pr)
11	TMD5 Data1 Shield	C2	Analog Green (or Component Y)
12	Reserved	C3	Analog Blue (or Component Pb)
13	Reserved	C4	Analog Horizontal Sync
14	+5 V Power	C5	Analog GND Return: (RGB or YPbPr)
15	Ground (for +5 V)		

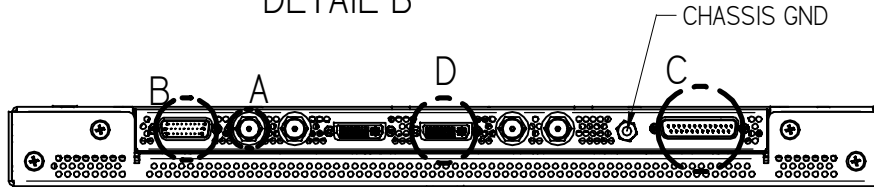
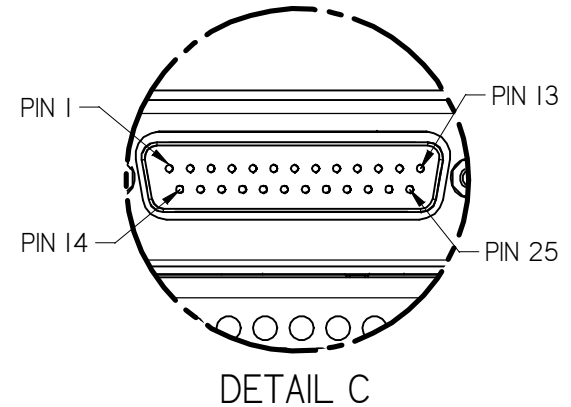
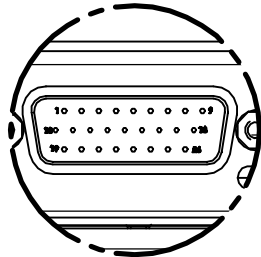
DB25 CONNECTOR PINOUT

Connector: 25 Pin Male D-Subminiature TYCO 5747842-3
Mate: 25 Pin Female D-Subminiature TYCO 207463-1 Contact: 166051-1 Connector Kit: 0300-052

Pin #	Monitor signal
1	+28 VDC
2	28 VDC RETURN
3	Reserved
4	Reserved
5	Reserved
6	Reserved
7	Reserved
8	Reserved
9	Reserved
10	Reserved
11	Reserved
12	Reserved
13	Reserved
14	Reserved
15	Reserved
16	Reserved
17	Reserved
18	Reserved
19	Reserved
20	Reserved
21	Reserved
22	Reserved
23	Reserved
24	Reserved
25	Reserved



*WHEN IN ERROR STATE THE TWO PINS CLOSE
(EXAMPLE: OVER TEMP)



THE INFORMATION CONTAINED HEREIN IS PROPRIETARY TO ROSEN AVIATION, LLC. IT SHALL NOT BE REPRODUCED OR DISCLOSED IN WHOLE OR IN PART OR USED FOR ANY DESIGN OR MANUFACTURE EXCEPT WHEN SUCH USER POSSESSES DIRECT, WRITTEN AUTHORIZATION FROM ROSEN AVIATION, LLC. THIS DRAWING MAY BE COVERED UNDER ONE OR MORE U.S. OR INTERNATIONAL PATENTS, PLEASE CONTACT ROSEN AVIATION FOR SPECIFIC INFORMATION.

	1020 OWEN LOOP SOUTH EUGENE, OREGON 97402 TEL: (541) 342-3802 FAX: (541) 342-4912	SIZE DWG NO A 1900-003-CD	REV D
	SCALE N.T.S. SHEET 2 OF 2		