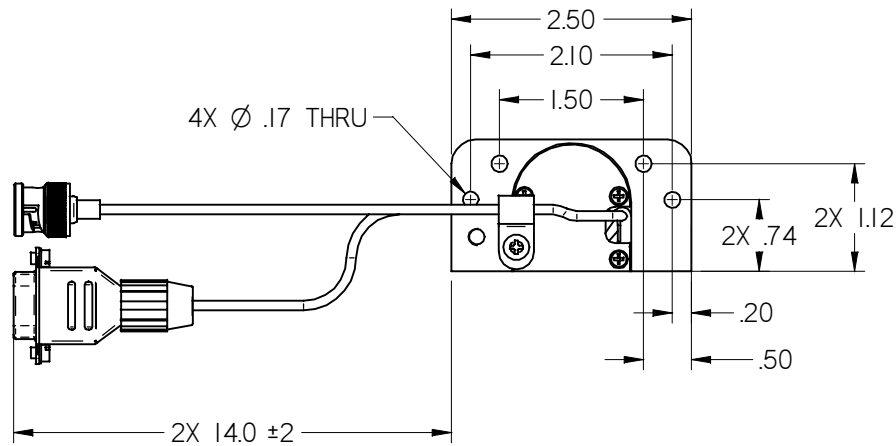
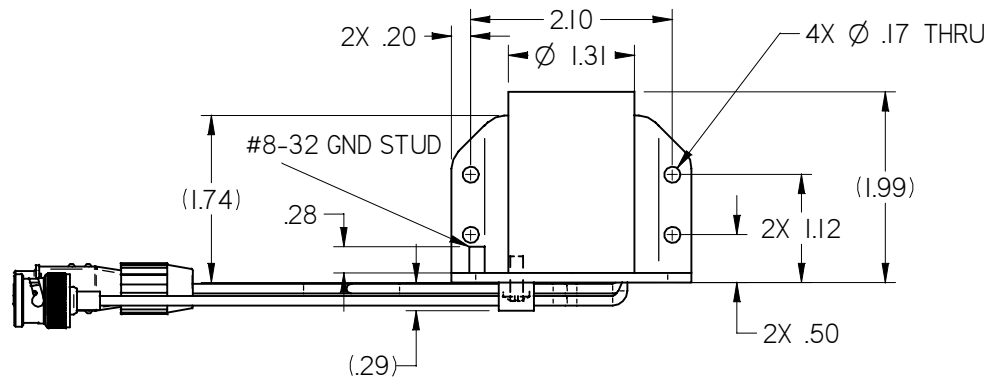
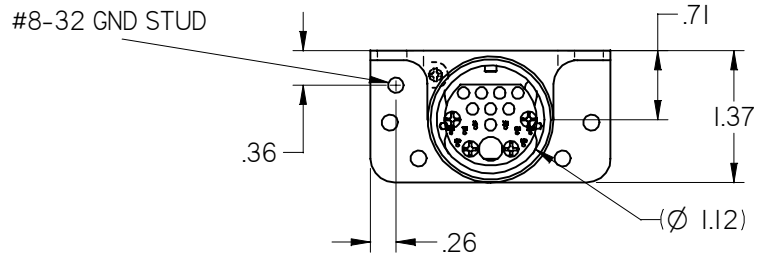


NOTES: (unless otherwise specified)

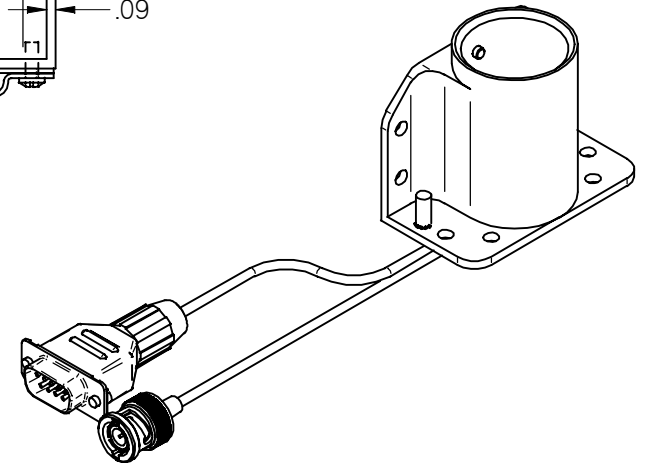
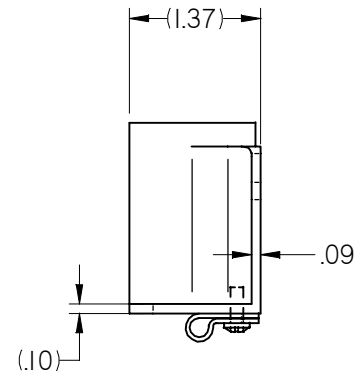
1. ASSEMBLY WEIGHT: .29 LBS. ±10%
2. HARNESS NOT SHOWN IN ALL VIEWS
3. REFER TO MONITOR DRAWING FOR PINOUT INFORMATION



REVISIONS

ZONE	REV	DESCRIPTION	DATE	BY	CHG NO	APRV
	A	INITIAL DRAWING RELEASE	06/14/11	DE	EC11391	
NOTES	B	CORRECT WEIGHT SPEC TO .29LBS	08/15/11	DE	EC11527	DRF

ELECTRONIC REVISION CONTROLLED



THE INFORMATION CONTAINED HEREIN IS PROPRIETARY TO ROSEN AVIATION, LLC. IT SHALL NOT BE REPRODUCED OR DISCLOSED IN WHOLE OR IN PART OR USED FOR ANY DESIGN OR MANUFACTURE EXCEPT WHEN SUCH USER POSSESSES DIRECT, WRITTEN AUTHORIZATION FROM ROSEN AVIATION. THIS DRAWING MAY BE COVERED UNDER ONE OR MORE U.S. OR INTERNATIONAL PATENTS, PLEASE CONTACT ROSEN AVIATION FOR SPECIFIC INFORMATION.

Rosen AVIATION 1020 OWEN LOOP SOUTH
EUGENE, OREGON 97402
TEL: (541) 342-3802 FAX: (541) 342-4912

TITLE
**OUTLINE & INSTALLATION DRAWING,
BASE RECEPTACLE, BASE ASSY
UNIVERSAL, SDI, RS232**

FIRST CALLED FOR: (FCF)

APPROVALS	INITIAL	DATE
DRAWN BY	DRF	05/25/11
CHECKER	MCS	05/27/11
ENGINEER	SC	06/09/11

DWG NO
0100-342-CD

SIZE	REV
A	B

SCALE N.T.S. SHEET 1 of 1

UNLESS OTHERWISE SPECIFIED DIMENSIONS ARE IN INCHES

.X = ± .1
.XX = ± .03

R = ± 5.0°

RADII = ± .020
INTERPRET DIM AND TOL PER ASME Y14.5M - 1994