

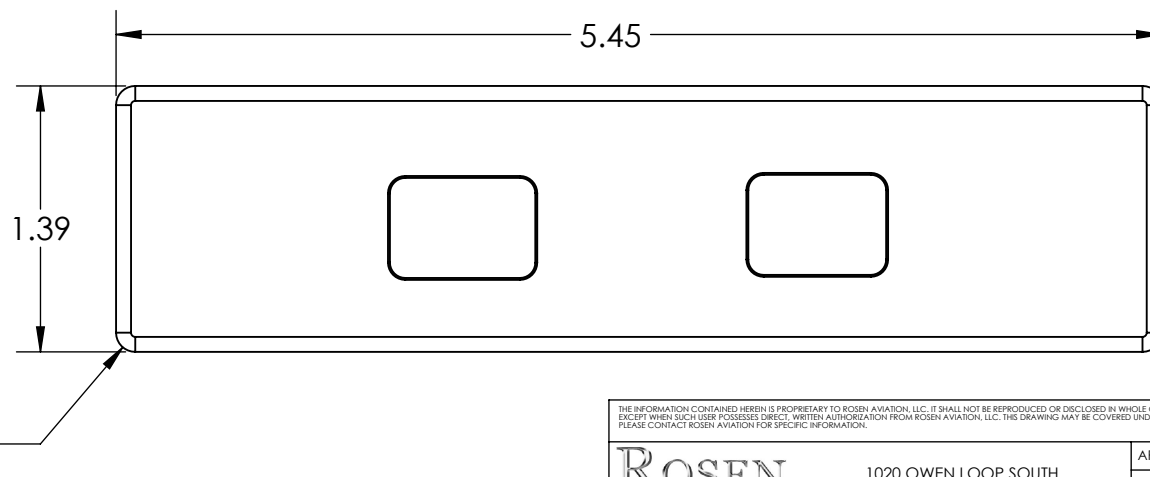
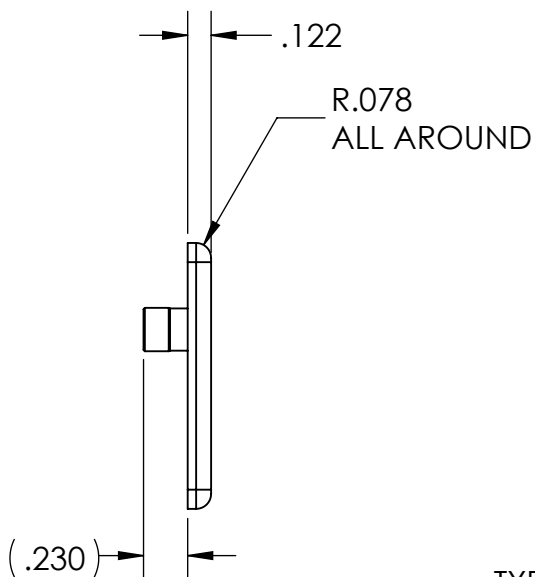
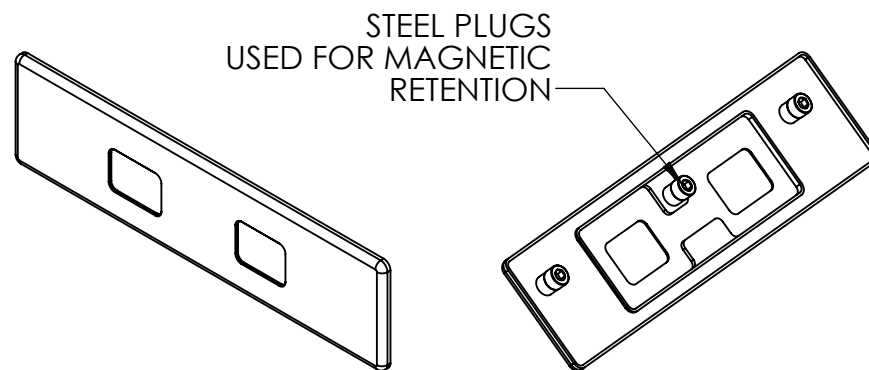
A

B

NOTES: (UNLESS OTHERWISE SPECIFIED)

1. ASSEMBLY WEIGHT: .05 LBS MAX
2. REMOVE SCREWS AS REQUIRED FOR SOME FINISHING PROCESSES. PLUG THREADED HOLES DURING ANY SECONDARY COATING PROCESSES. MAXIMUM ALLOWABLE COATING THICKNESS .0015 INCHES
3. PROTECT COSMETIC SURFACES FROM DAMAGE
4. DURING FINAL ASSEMBLY IF SCREWS REMOVED, APPLY LOCTITE 425 TO SCREWS AND TORQUE TO 9 IN-LB ± 1 IN-LB

REVISIONS						
ZONE	REV	DESCRIPTION	DATE	BY	EC NO.	APRV
	A	INITIAL RELEASE	02/06/18	MCS	18-0080	
	B	CHANGE PROJECT FROM "SMARTFLEX" TO "MIP"				



UNLESS OTHERWISE SPECIFIED DIMENSIONS ARE IN INCHES
.X = ± .1
.XX = ± .02
.XXX = ± .005
∠ = ± 1.0°
RADII ± .020
INTERPRET DIM AND TOL PER ASME Y14.5M - 1994

THE INFORMATION CONTAINED HEREIN IS PROPRIETARY TO ROSEN AVIATION, LLC. IT SHALL NOT BE REPRODUCED OR DISCLOSED IN WHOLE OR IN PART OR USED FOR ANY DESIGN OR MANUFACTURE EXCEPT WHEN SUCH USER POSSESSES DIRECT, WRITTEN AUTHORIZATION FROM ROSEN AVIATION, LLC. THIS DRAWING MAY BE COVERED UNDER ONE OR MORE U.S. OR INTERNATIONAL PATENTS. PLEASE CONTACT ROSEN AVIATION FOR SPECIFIC INFORMATION.

ROSEN AVIATION
 1020 OWEN LOOP SOUTH
 EUGENE, OREGON 97402
 TEL: (541) 342-3802 FAX: (541) 342-4912

TITLE: **OUTLINE AND INSTALLATION DRAWING, MIP, BEZEL, RAW**

FIRST CALLED FOR: (PCF)
359-MIP

APPROVALS	INITIAL	DATE
DRAWN BY	MCS	01/31/18
CHECKER	BEF	02/01/18
ENGINEER	MCS	02/01/18
MIP100-900-CD		
SIZE		REV
A		B
SCALE: 1:1		SHEET 1 OF 1

A

B © 2018 ROSEN AVIATION, LLC