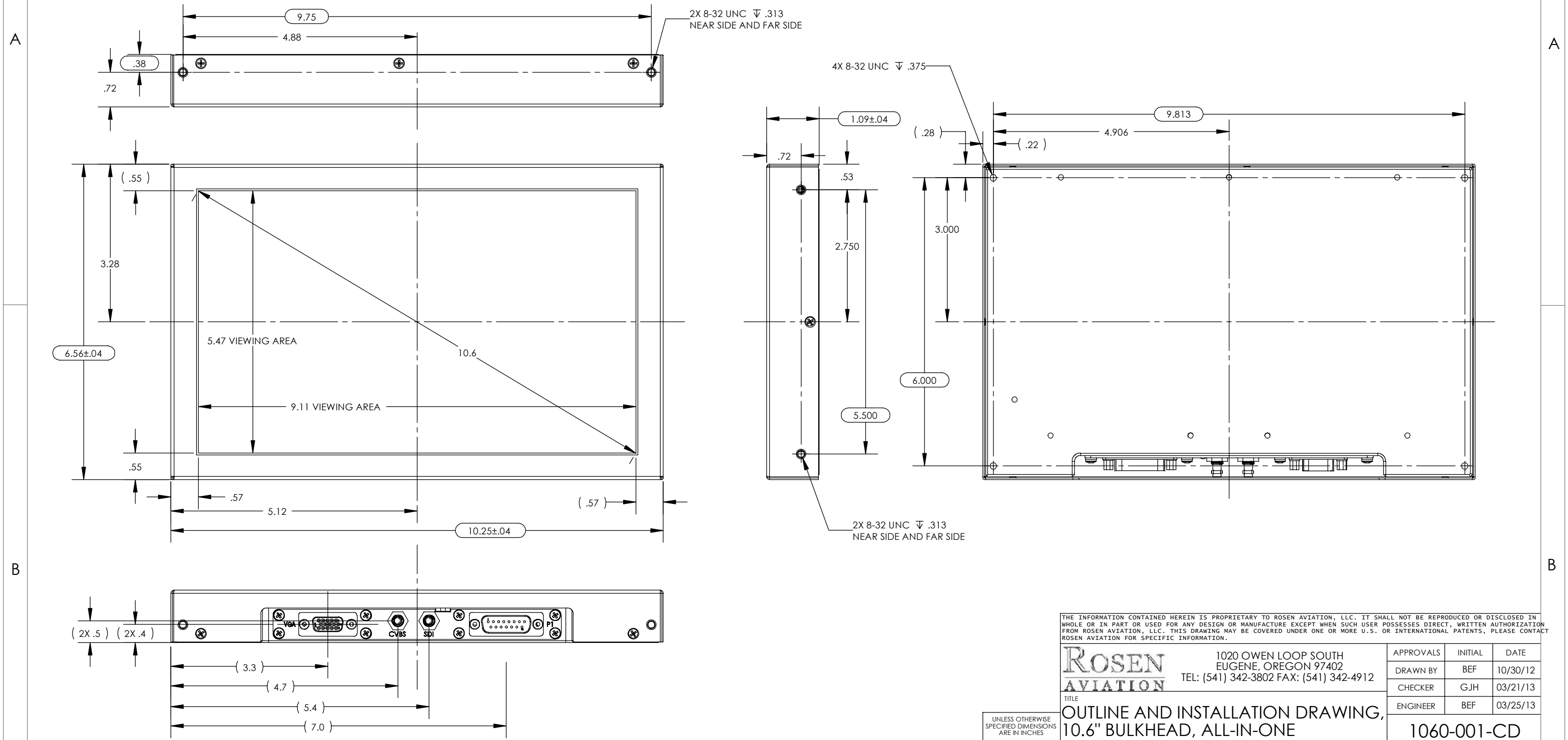


# ELECTRONIC REVISION CONTROLLED

NOTES: (UNLESS OTHERWISE SPECIFIED)

1. ASSEMBLY WEIGHT: 2.44 LBS. ±10%
2. OBSERVE ESD SAFE HANDLING PRACTICES
3. CLEARANCE REQUIREMENTS:  
 1/8" TO BACK OF UNIT OR  
 1/4" TO SIDES AND TOP AND BOTTOM OF UNIT OR  
 UNIT SECURED TO ALUMINUM STRUCTURE (STRUCTURE ACTS AS HEAT SINK)
4. MOUNTING MINIMUM OF 4 EA 8-32 FASTENERS  
 ACCEPTABLE MOUNTING POSITIONS  
 4 EA ON BACK OF UNIT OR  
 2 EA ON EACH SIDE OF UNIT (TOTAL OF 4) OR  
 2 EA ON THE TOP AND BOTTOM OF UNIT (TOTAL OF 4)
5. CONNECTOR KITS NOT INCLUDED
6. DENOTES ROSEN AVIATION FAI INSPECTION DIMENSION

REVISIONS						
ZONE	REV	DESCRIPTION	DATE	BY	EC NO.	APRV
	3.0	UPDATED WITH POWER & CONNECTOR KIT INFO	02/20/13	BEF	NEC13-031	GH
	A	RELEASE TO ALPHA UPDATE WEIGHT AND ADD .040 TOL TO 1.09 DIMENSION	03/25/13	DE	13-0122	
A4	B	CHANGE P1 FROM FEMALE TO MALE D-SUB	04/16/13	DE	13-0157	BEF
PG2	C	RESERVE P1 PIN 12	07/29/13	DE	13-0276	JC



THE INFORMATION CONTAINED HEREIN IS PROPRIETARY TO ROSEN AVIATION, LLC. IT SHALL NOT BE REPRODUCED OR DISCLOSED IN WHOLE OR IN PART OR USED FOR ANY DESIGN OR MANUFACTURE EXCEPT WHEN SUCH USER POSSESSES DIRECT, WRITTEN AUTHORIZATION FROM ROSEN AVIATION, LLC. THIS DRAWING MAY BE COVERED UNDER ONE OR MORE U.S. OR INTERNATIONAL PATENTS, PLEASE CONTACT ROSEN AVIATION FOR SPECIFIC INFORMATION.

 1020 OWEN LOOP SOUTH EUGENE, OREGON 97402 TEL: (541) 342-3802 FAX: (541) 342-4912	APPROVALS	INITIAL	DATE
	DRAWN BY	BEF	10/30/12
	CHECKER	GJH	03/21/13
	ENGINEER	BEF	03/25/13
TITLE <b>OUTLINE AND INSTALLATION DRAWING,                  10.6" BULKHEAD, ALL-IN-ONE</b>			<b>1060-001-CD</b>
FIRST CALLED FOR: (FCF) <b>10.6in BulkHead - 301</b>			SIZE <b>B</b>
			REV <b>C</b>
SCALE: 1:2			SHEET 1 OF 2

UNLESS OTHERWISE SPECIFIED DIMENSIONS ARE IN INCHES  
 .X = ±.100  
 .XX = ±.020  
 .XXX = ±.005  
 ∠ = ±1.0°  
 RADII ±.020  
 INTERPRET DIM AND TOL PER ASME Y14.5M - 1994

**PERFORMANCE SPECIFICATIONS (REF)**

**LCD Performance \***

Screen Resolution (pixels)	1280 x 768
Display Viewing Area (mm)	231.36mm X 138.816mm
Horizontal Viewing Angle	±85°
Vertical Viewing Angle	±85°
Contrast Ratio (Typical)	1000:1
Screen Brightness (Typical)	400 cd/m <sup>2</sup>

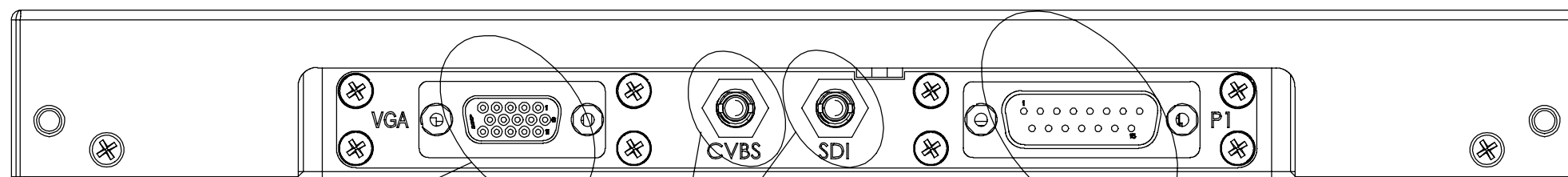
**Power Requirements**

Nominal Voltage / Current	28VDC / .66 A
Inrush Current	6.2 A for 0.13 ms
Current @ 18 VDC	1.1 A
Power Consumption	20 W Max

**Environmental Specifications**

Operating Temperature	0°C - 50°C
Altitude	15,000ft
Humidity	95%RH
Vibration	1.48 grms
Power Input	DO-160E Cat Z(A)
Radio Frequency Susceptibility	DO-160F Cat T
Emission of RF Energy	DO-160F Cat M

\* LCD Manufacturer's Specifications



VGA	
SUGGESTED CONNECTOR KIT (0300-055)	
CONNECTOR KIT CONTENTS	
HOUSING	TYCO 748364-1
CONTACT	TYCO 748333-2
SHELL	3M 3357-9209

CONNECTOR	
VGA	Function
1	Red In
2	Green In
3	Blue In
4	N/C
5	N/C
6	Red Return
7	Green Return
8	Blue Return
9	N/C
10	GND
11	N/C
12	VGA-SDA
13	Hsync
14	Vsync
15	VGA-SCL

CVBS / SDI	
SUGGESTED MATING CONNECTOR (HD-BNC PLUG)	
For reference information see: <a href="http://hdbnc.amphenolrf.com">http://hdbnc.amphenolrf.com</a>	

P1 (POWER AND COMM)	
SUGGESTED CONNECTOR KIT (0300-053)	
CONNECTOR KIT CONTENTS	
HOUSING	AMP 205205-2
CONTACT	AMP 66504-3
SHELL	ITT Cannon DA24658

CONNECTOR	
P1	Function
1	Return
2	28 VDC
3	IR 3.3 VDC Out
4	Communication GND
5	IR-In
6	Software Function (GND for Venue)
7	RESERVED
8	RS-232-RX
9	RS-232-TX
10	RS-485A
11	RS-485B
12	RESERVED
13	Discrete In #1 (Source Select)
14	Discrete In #2 (On / Off)
15	Chassis GND

THE INFORMATION CONTAINED HEREIN IS PROPRIETARY TO ROSEN AVIATION, LLC. IT SHALL NOT BE REPRODUCED OR DISCLOSED IN WHOLE OR IN PART OR USED FOR ANY DESIGN OR MANUFACTURE EXCEPT WHEN SUCH USER POSSESSES DIRECT, WRITTEN AUTHORIZATION FROM ROSEN AVIATION, LLC. THIS DRAWING MAY BE COVERED UNDER ONE OR MORE U.S. OR INTERNATIONAL PATENTS, PLEASE CONTACT ROSEN AVIATION FOR SPECIFIC INFORMATION.



1020 OWEN LOOP SOUTH  
EUGENE, OREGON 97402  
TEL: (541) 342-3802 FAX: (541) 342-4912

SIZE	<b>B</b> 1060-001-CD	REV	<b>C</b>
SCALE:	1:1	SHEET	2 OF 2