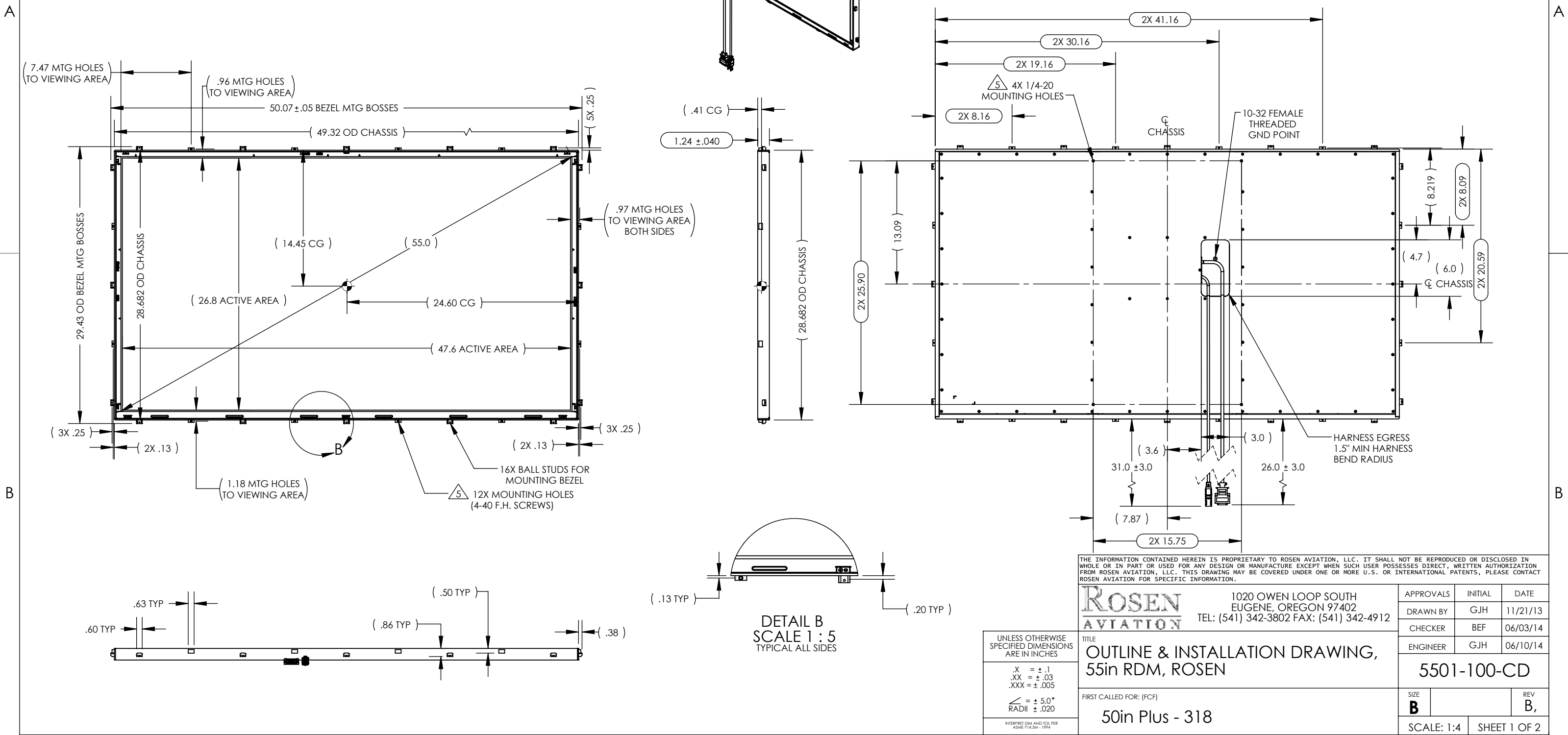


NOTES: (UNLESS OTHERWISE SPECIFIED)

1. ASSEMBLY WEIGHT: 57.1 LBS. ± 5%
 2. HARNESS LENGTH: AS SHOWN
 3. OBSERVE ESD SAFE HANDLING PRACTICES
 4. SOME MINOR PARTS, LABELS, HARNESSES AND INSTRUCTIONS OMITTED FROM SOME VIEWS FOR CLARITY
- △ MOUNTING:
 12 EA 4-40 PHILIPS HEAD SCREWS, OR
 4 EA 1/4-20 FASTENERS, MAX INSERTION .5"
6. MATING CONNECTOR KITS NOT INCLUDED
 7. ○ DENOTES ROSEN AVIATION FIRST ARTICLE INSPECTION DIMENSION
 8. VIEWING AREA IS NOT THE SAME Q_C AS CHASSIS CENTERLINE

REVISIONS						
ZONE	REV	DESCRIPTION	DATE	BY	EC NO	APRV
	1.0	INITIAL DRAWING RELEASE	11/21/13	GJH	NEC13-185	MCS
pg2	2.0	CHG RMEB REF FROM 0700-105 TO -107	03/05/14	GJH	NEC14-051	SC
	A	RELEASE FOR PRODUCTION	06/10/14	GJH	14-0192	
SHT 2	B	ADDED CONNECTION NOTE	047/03/14	BEF	14-0264	SC

ELECTRONIC REVISION CONTROLLED



THE INFORMATION CONTAINED HEREIN IS PROPRIETARY TO ROSEN AVIATION, LLC. IT SHALL NOT BE REPRODUCED OR DISCLOSED IN WHOLE OR IN PART OR USED FOR ANY DESIGN OR MANUFACTURE EXCEPT WHEN SUCH USER POSSESSES DIRECT, WRITTEN AUTHORIZATION FROM ROSEN AVIATION, LLC. THIS DRAWING MAY BE COVERED UNDER ONE OR MORE U.S. OR INTERNATIONAL PATENTS, PLEASE CONTACT ROSEN AVIATION FOR SPECIFIC INFORMATION.

	1020 OWEN LOOP SOUTH EUGENE, OREGON 97402 TEL: (541) 342-3802 FAX: (541) 342-4912		
	APPROVALS	INITIAL	DATE
	DRAWN BY	GJH	11/21/13
	CHECKER	BEF	06/03/14
ENGINEER	GJH	06/10/14	
5501-100-CD			
TITLE OUTLINE & INSTALLATION DRAWING, 55in RDM, ROSEN			SIZE B
FIRST CALLED FOR: (FCF) 50in Plus - 318			REV B,
SCALE: 1:4		SHEET 1 OF 2	

UNLESS OTHERWISE SPECIFIED DIMENSIONS ARE IN INCHES

.X = ± .1
 .XX = ± .03
 .XXX = ± .005

∠ = ± 5.0°
 RADII ± .020

INTERPRET DIM AND TOL PER ASME Y14.5M-1994

DETAIL B
 SCALE 1 : 5
 TYPICAL ALL SIDES

PERFORMANCE SPECIFICATIONS (REF)

LCD Performance*	
Screen Resolution (pixels)	1920 x 1080
Display View ing Area (mm)	1209.6 X 680.4
Horizontal View ing Angle	±89°
Vertical View ing Angle	±89°
Contrast Ratio (Typical)	1400:1
Screen Brightness (Typical)	350 cd/m ² typ

Power Requirements**	
Power Consumption	See Remote Electronics Box

Environmental Specifications	
Operating Temperature	0°C - 50°C
Altitude	16,400ft
Humidity	90%RH
Vibration	1.48 grms
Power Input	DO-160E Cat Z(A)
Radio Frequency	DO-160F Cat T
Emission of RF Energy	DO-160F Cat M

* LCD Manufacturer's Specifications

** See 0700-107-CD drawing for additional power information

*** Do not connect these pins to aircraft power

Connector Plug (P3) Pinout - 15 Position

Connector: 15 Pin Male, Tyco 205206-3
Mate: 15 Pin Female *** Tyco 205205-2 Contact: 66504-3 Connector Kit: 0300-053

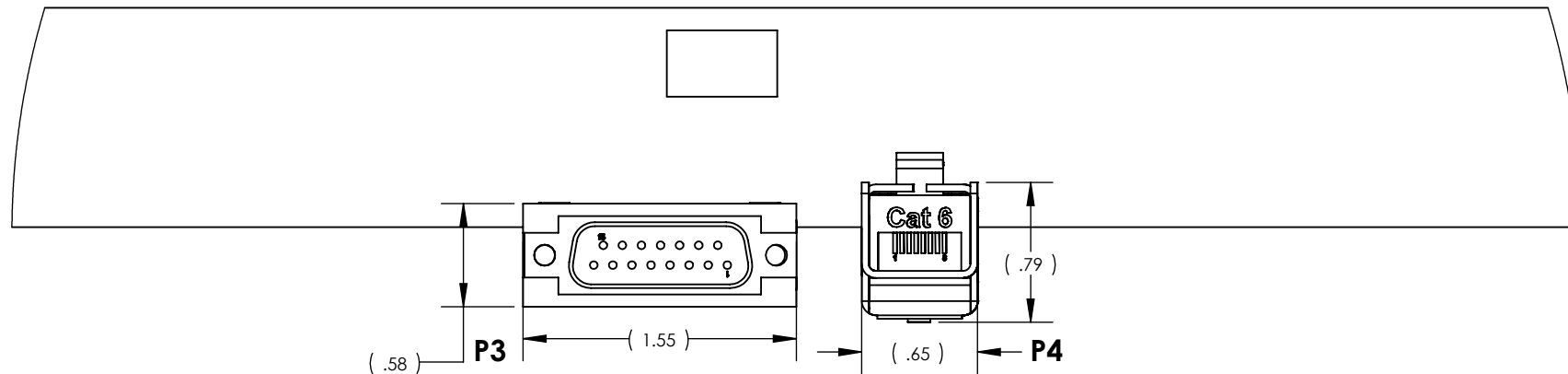
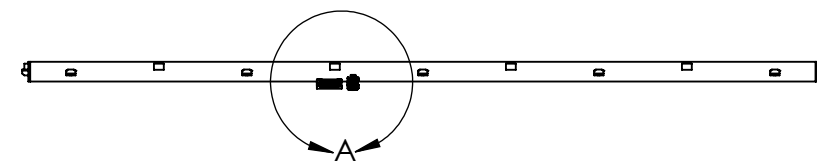
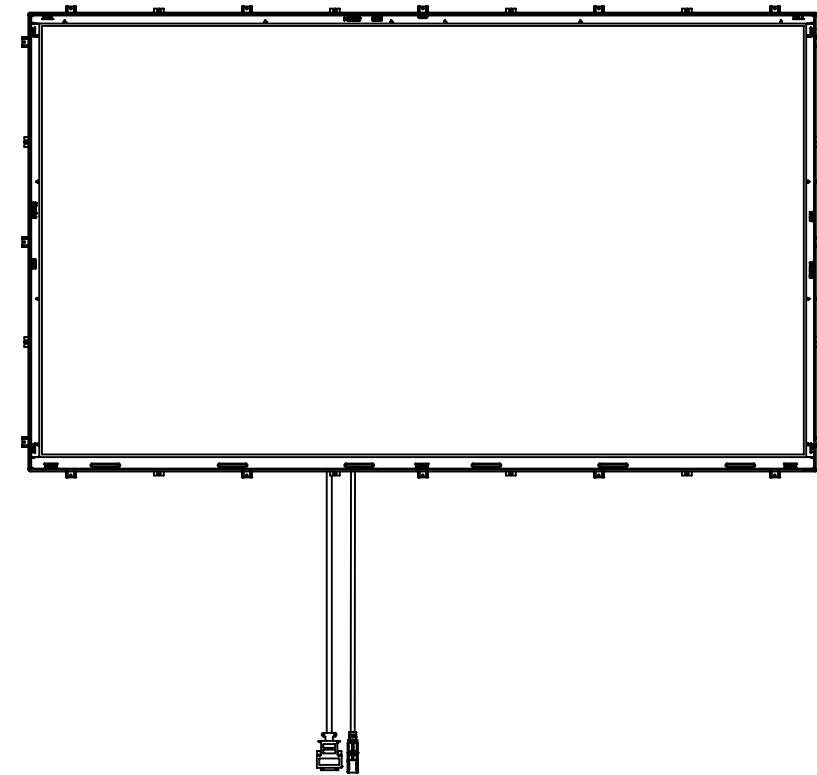
Pin #	Monitor signal
1	Reserved
2	PWR_POS
3	PWR_POS
4	PWR_POS
5	PWR_POS
6	Reserved
7	Ground
8	RS232_RX
9	Reserved
10	PWR_NEG
11	PWR_NEG
12	PWR_NEG
13	PWR_NEG
14	IR
15	RS232_TX

Female RJ-45 (P4)

Mates Male RJ-45 Connector Kit: 0300-050

Pin #	Monitor signal
1	CAT6_+12V
2	Ground
3	CAT6_HTPDN
4	CAT6_TX0_N
5	CAT6_TX0_P
6	CAT6_LOCKN
7	CAT6_TX1_N
8	CAT6_TX1_P
Shell	Ground

FOR INTERCONNECT CABLE
RECOMMENDATIONS, SEE ROSEN
DOCUMENT: 105821



DETAIL A
SCALE 1 : 1

THE INFORMATION CONTAINED HEREIN IS PROPRIETARY TO ROSEN AVIATION, LLC. IT SHALL NOT BE REPRODUCED OR DISCLOSED IN WHOLE OR IN PART OR USED FOR ANY DESIGN OR MANUFACTURE EXCEPT WHEN SUCH USER POSSESSES DIRECT, WRITTEN AUTHORIZATION FROM ROSEN AVIATION, LLC. THIS DRAWING MAY BE COVERED UNDER ONE OR MORE U.S. OR INTERNATIONAL PATENTS, PLEASE CONTACT ROSEN AVIATION FOR SPECIFIC INFORMATION.



1020 OWEN LOOP SOUTH
EUGENE, OREGON 97402
TEL: (541) 342-3802 FAX: (541) 342-4912

SIZE B	5501-100-CD	REV B,
SCALE: 1:12	SHEET 2 OF 2	