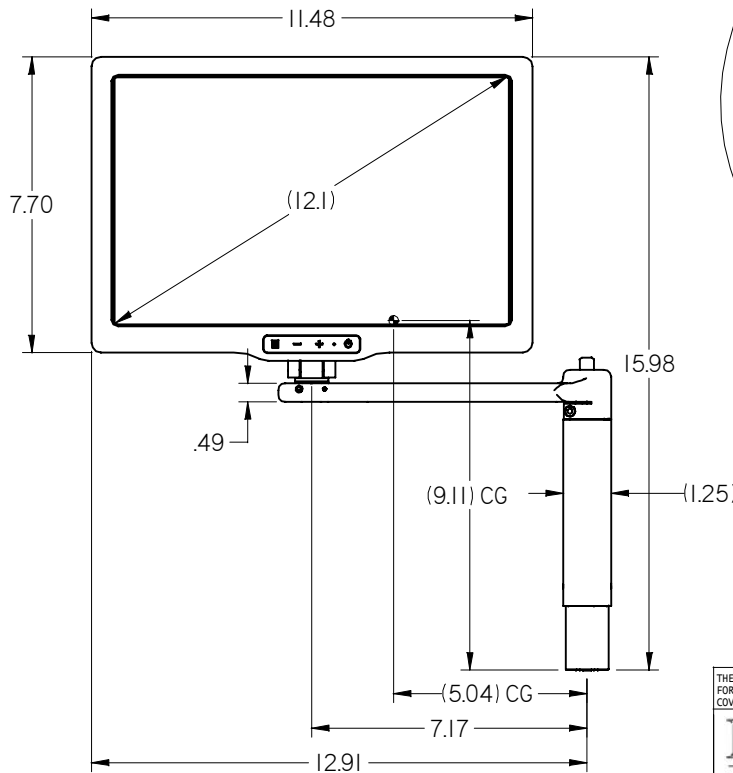
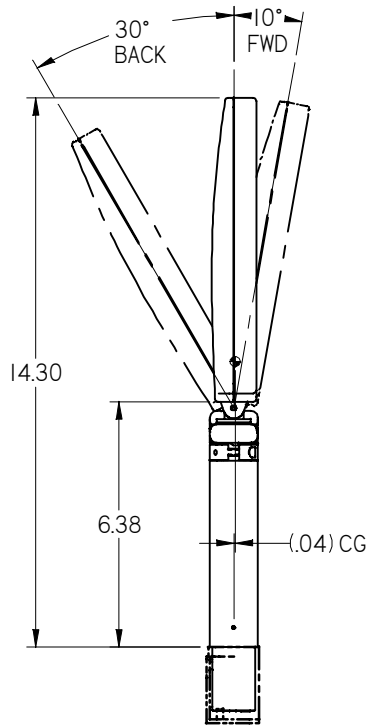
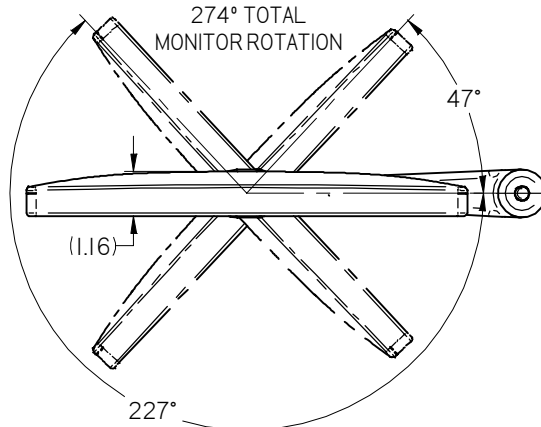


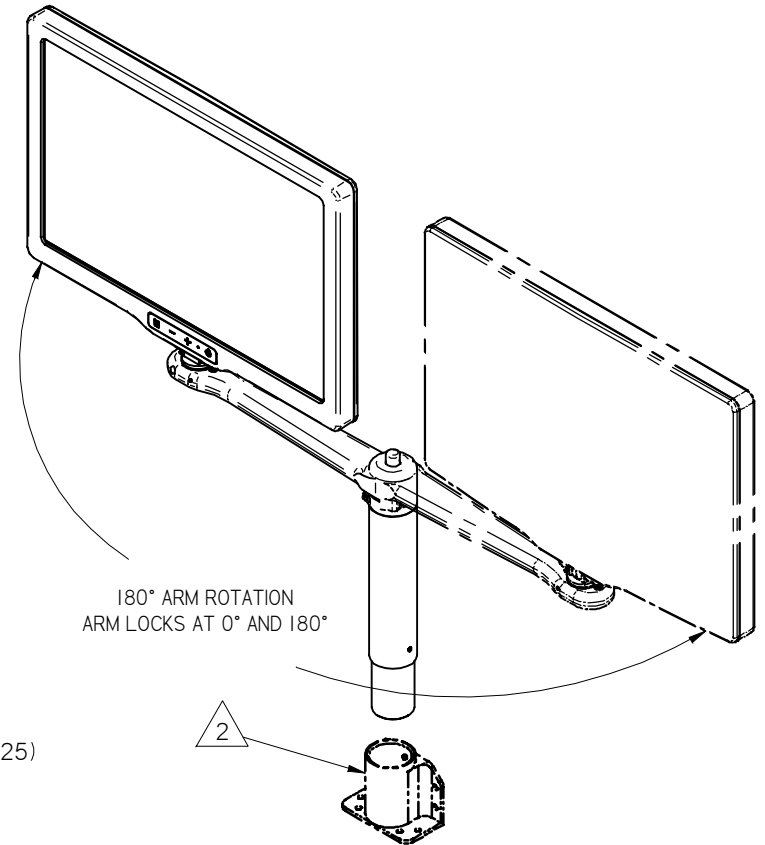
NOTES: (unless otherwise specified)

- 1. ASSEMBLY WEIGHT: 3.6 ± 10% LB
- 2. BASE SOLD SEPARATELY
- 3. HARNESS LENGTH: REFER TO BASE DRAWING
- 4. SOME MINOR PARTS, LABELS, HARNESSES AND INSTRUCTIONS OMITTED FOR CLARITY



REVISIONS						
ZONE	REV	DESCRIPTION	DATE	BY	CHG NO	APRV
	A	INITIAL DRAWING RELEASE	09/19/12	GJH	12-0256	

**ELECTRONIC REVISION CONTROLLED**



THE INFORMATION CONTAINED HEREIN IS PROPRIETARY TO ROSEN AVIATION, LLC. IT SHALL NOT BE REPRODUCED OR DISCLOSED IN WHOLE OR IN PART OR USED FOR ANY DESIGN OR MANUFACTURE EXCEPT WHEN SUCH USER POSSESSES DIRECT, WRITTEN AUTHORIZATION FROM ROSEN AVIATION. THIS DRAWING MAY BE COVERED UNDER ONE OR MORE U.S. OR INTERNATIONAL PATENTS, PLEASE CONTACT ROSEN AVIATION FOR SPECIFIC INFORMATION.

<b>ROSEN AVIATION</b> 1020 OWEN LOOP SOUTH EUGENE, OREGON 97402 TEL: (541) 342-3802 FAX: (541) 342-4912	APPROVALS	INITIAL	DATE	
	DRAWN BY	GJH	08/15/12	
	CHECKER	SC	09/19/12	
	ENGINEER	GJH	09/19/12	
TITLE <b>OUTLINE &amp; INSTALLATION DRAWING,          12" MONITOR, CENTER, RS232/SDI</b>			DWG NO 1200-337-CD	
FIRST CALLED FOR: (FCF)			SIZE <b>A</b>	REV <b>A</b>
SCALE NTS		SHEET	1 OF 2	

UNLESS OTHERWISE SPECIFIED DIMENSIONS ARE IN INCHES

.X = ± .1  
.XX = ± .03

= ± 5.0°

RADII = ± .020

INTERPRET DIM AND TOL PER ASME Y14.5M - 1994

REFER TO [www.rosenaviation.com](http://www.rosenaviation.com) FOR THE LATEST REVISION INFORMATION.

**PERFORMANCE SPECIFICATIONS** (Reference)

<b>LCD Performance</b>	
Screen Resolution (pixels)	1280 x 800
Video Standards Supported	<b>SDI:</b> 480i30, 576i25, 720p50/60, 1080i25/30, 1080p50/60
Display Viewing Area (mm)	261 X 163
Horizontal Viewing Angle	-80° to 80°
Vertical Viewing Angle	-60° to 80°
Contrast Ratio (Typical)	600:1
Screen Brightness (Typical)	500 cd/m <sup>2</sup>

<b>Power Requirements</b>	
Nominal Voltage/Current	28VDC / 0.75 A
Inrush Current	1.8 A for 18 ms
Op Voltage/Current Range	18 VDC/1.17 A - 32VDC/0.66 A (1080p60)
Maximum Current Draw	1.2 A
Power Consumption	22 W Max

<b>Environmental Specifications</b>	
Operating Temperature	0°C - 50°C
Altitude	15,000ft
Humidity	95%RH
Vibration	1.48 grms
Power Input	DO-160F Cat Z(A)
Radio Frequency Susceptibility	DO-160F Cat T
Emission of RF Energy	DO-160F Cat M

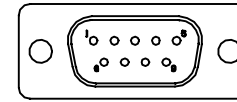
**BASE RECEPTACLE: 0100-342**

Connector: 9-Pin Male Dsub  
Mating Connector: 9-Pin Female D-Sub (0300-022, Not Included)

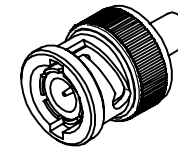
D-sub Pin #	Monitor signal
1	Chassis Ground
2	+28V DC
3	DC Return
6	RS-232 RX
7	RS-232 TX
8	RS-232 GND

Connector: BNC Plug, 75 Ohm, 4 GHz Min  
Mate: BNC Jack, 75 Ohm, 4 GHz Min (0300-054; Not Included)

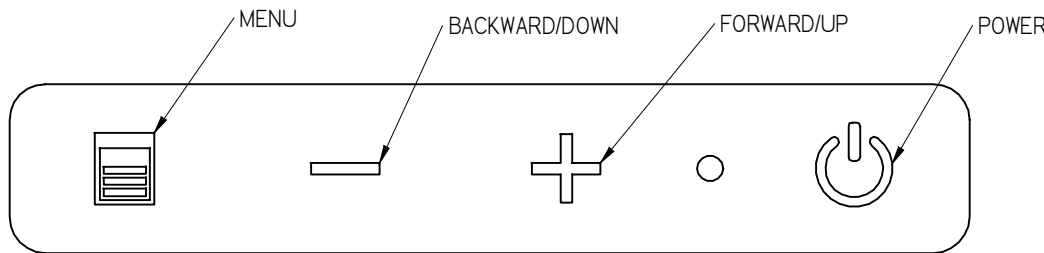
BNC Signal	SDI Video
BNC Shield	SDI Video Return



9-Pin Male D-Sub



BNC Plug (SDI)



MONITOR TOUCH CONTROLS

THE INFORMATION CONTAINED HEREIN IS PROPRIETARY TO ROSEN AVIATION, LLC. IT SHALL NOT BE REPRODUCED OR DISCLOSED IN WHOLE OR IN PART OR USED FOR ANY DESIGN OR MANUFACTURE EXCEPT WHEN SUCH USER POSSESSES DIRECT, WRITTEN AUTHORIZATION FROM ROSEN AVIATION, LLC. THIS DRAWING MAY BE COVERED UNDER ONE OR MORE U.S. OR INTERNATIONAL PATENTS. PLEASE CONTACT ROSEN AVIATION FOR SPECIFIC INFORMATION.

<b>ROSEN AVIATION</b>	1020 OWEN LOOP SOUTH EUGENE, OREGON 97402 TEL: (541) 342-3802 FAX: (541) 342-4912	SIZE	DWG NO	REV
		A	1200-337-CD	A
		SCALE	NONE	SHEET 2 OF 2